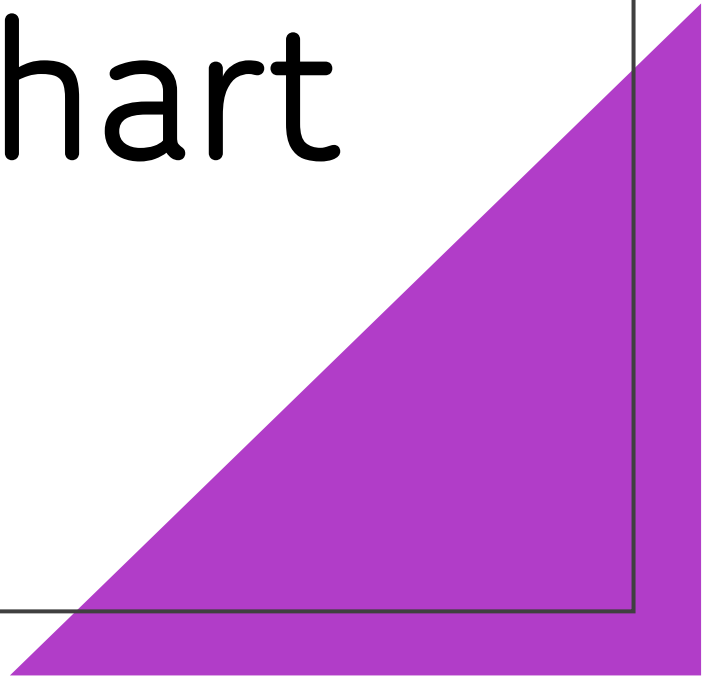
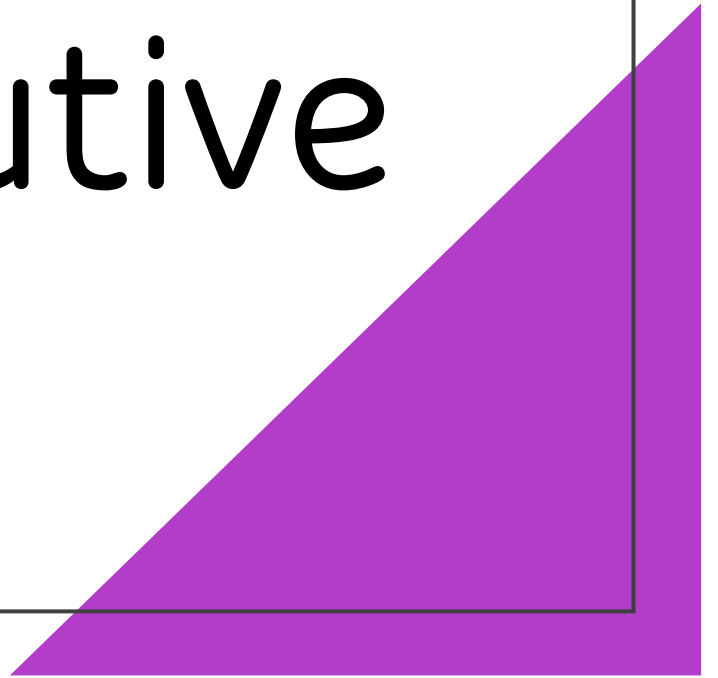


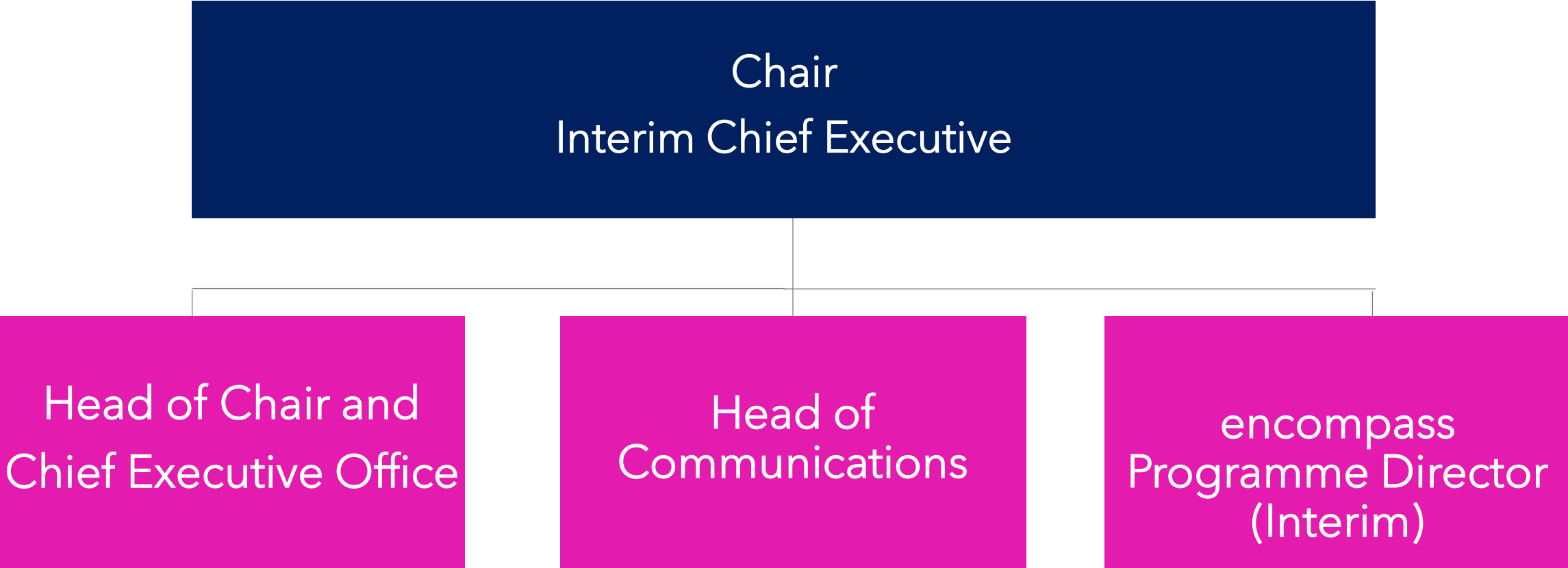
Southern Health and
Social Care Trust
Organisational Chart
2025



Office of the Chair and Chief Executive



Office of the Chair and Chief Executive



Office of the Chair and Chief Executive

Chair and Chief Executive Office

Head of Chair and
Chief Executive Office

Office Manager

Administration Facilities
Coordinator

Personal Assistant to Chair and Chief Executive

Board Assurance Manager

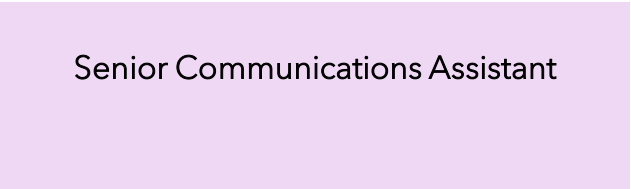
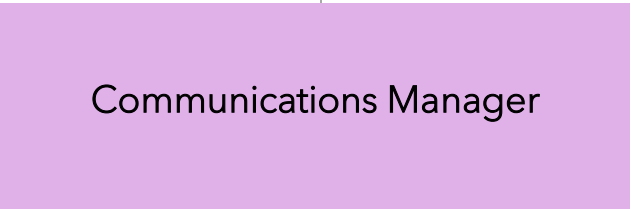
Committee
Secretary

Committee
Secretary

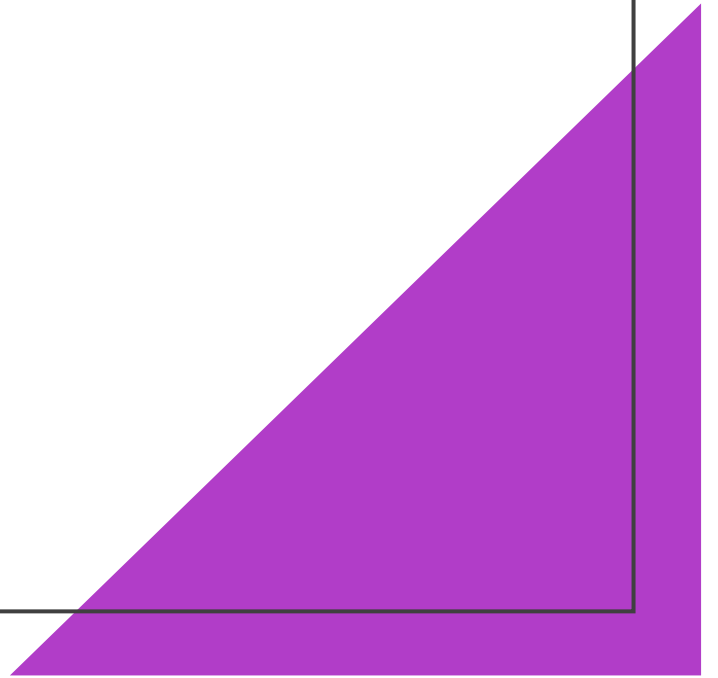
Committee
Secretary

Office of the Chair and Chief Executive

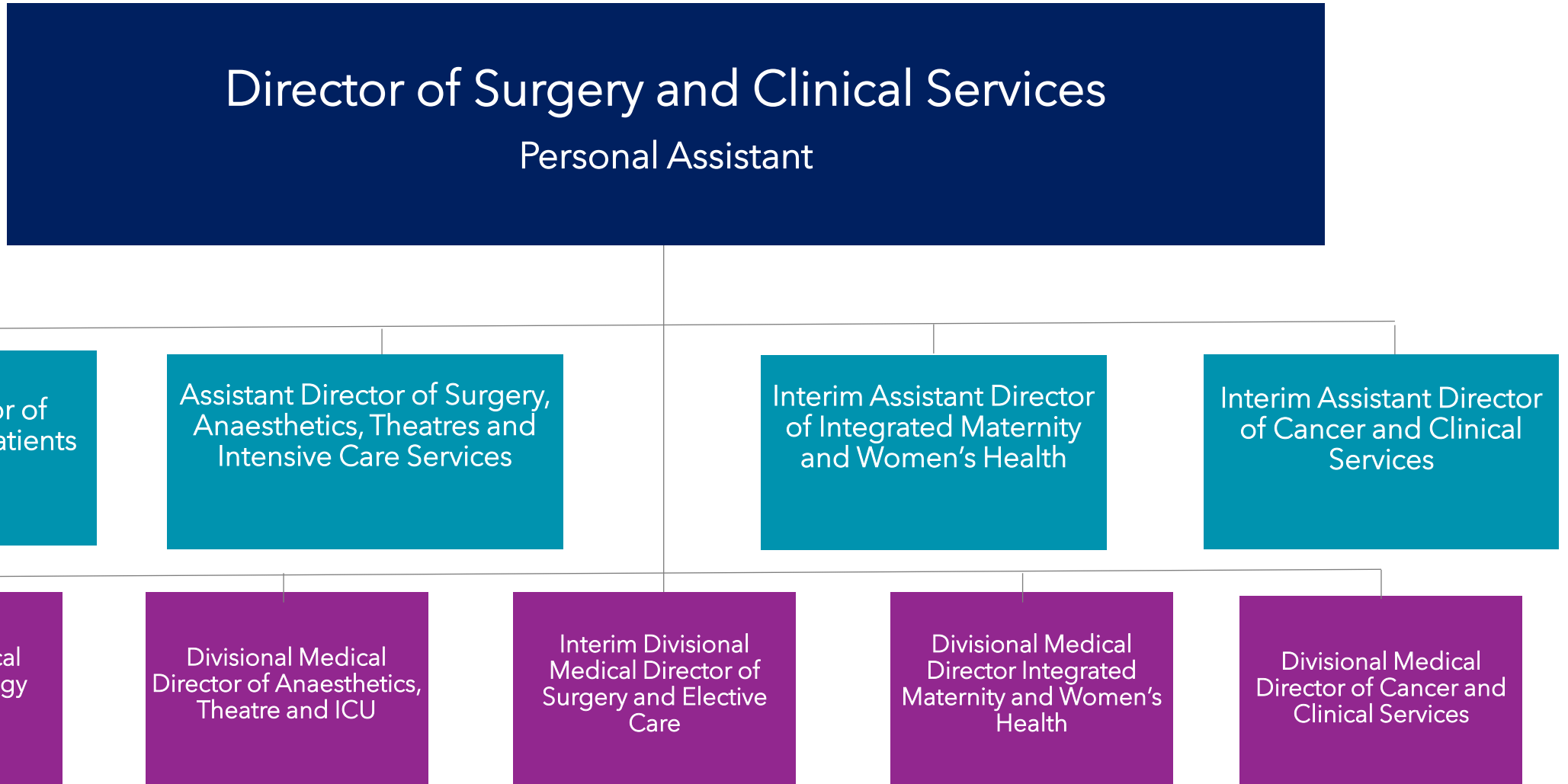
Communications Office



Directorate of Surgery and Clinical Services

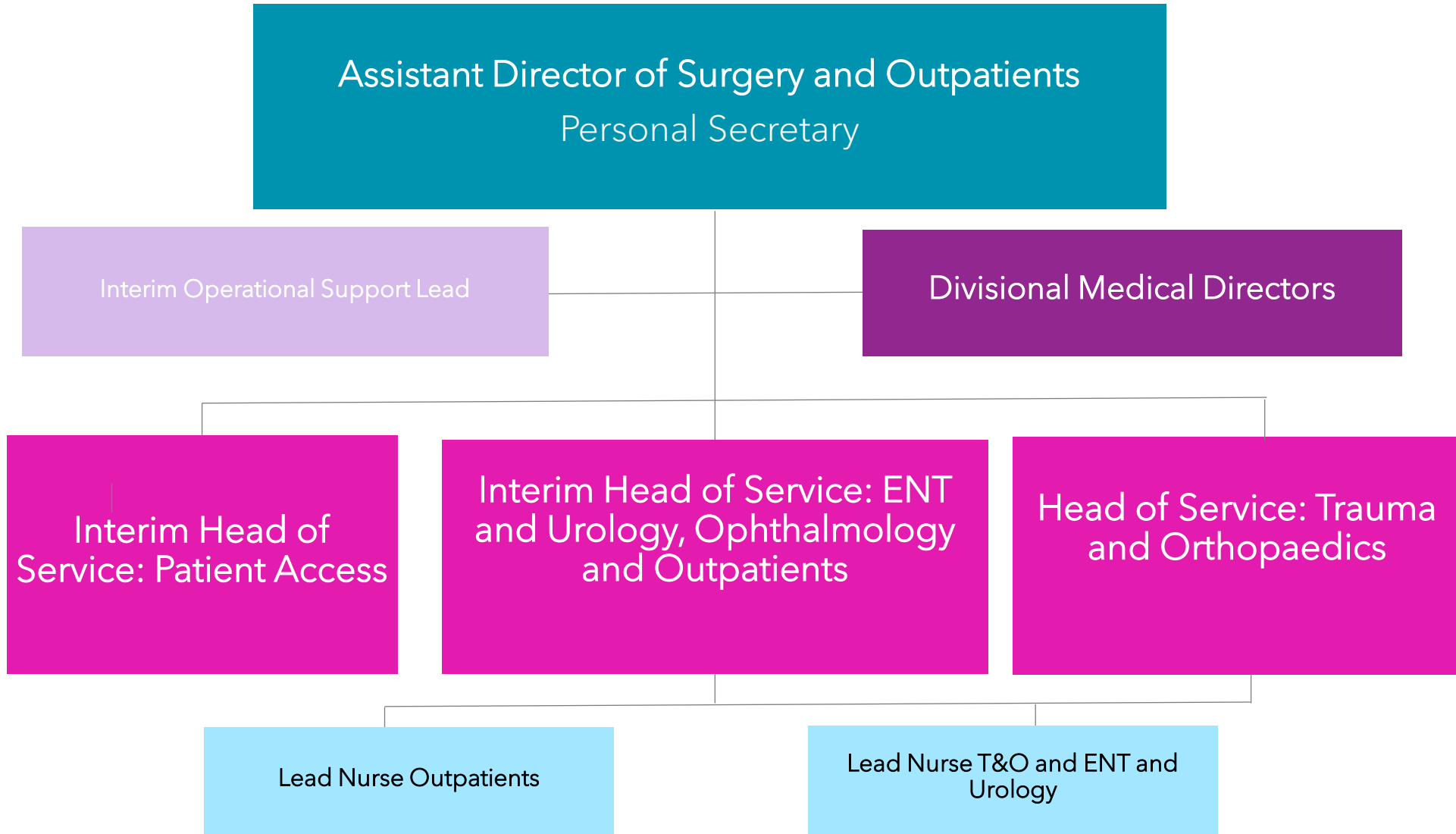


Directorate of Surgery and Clinical Services



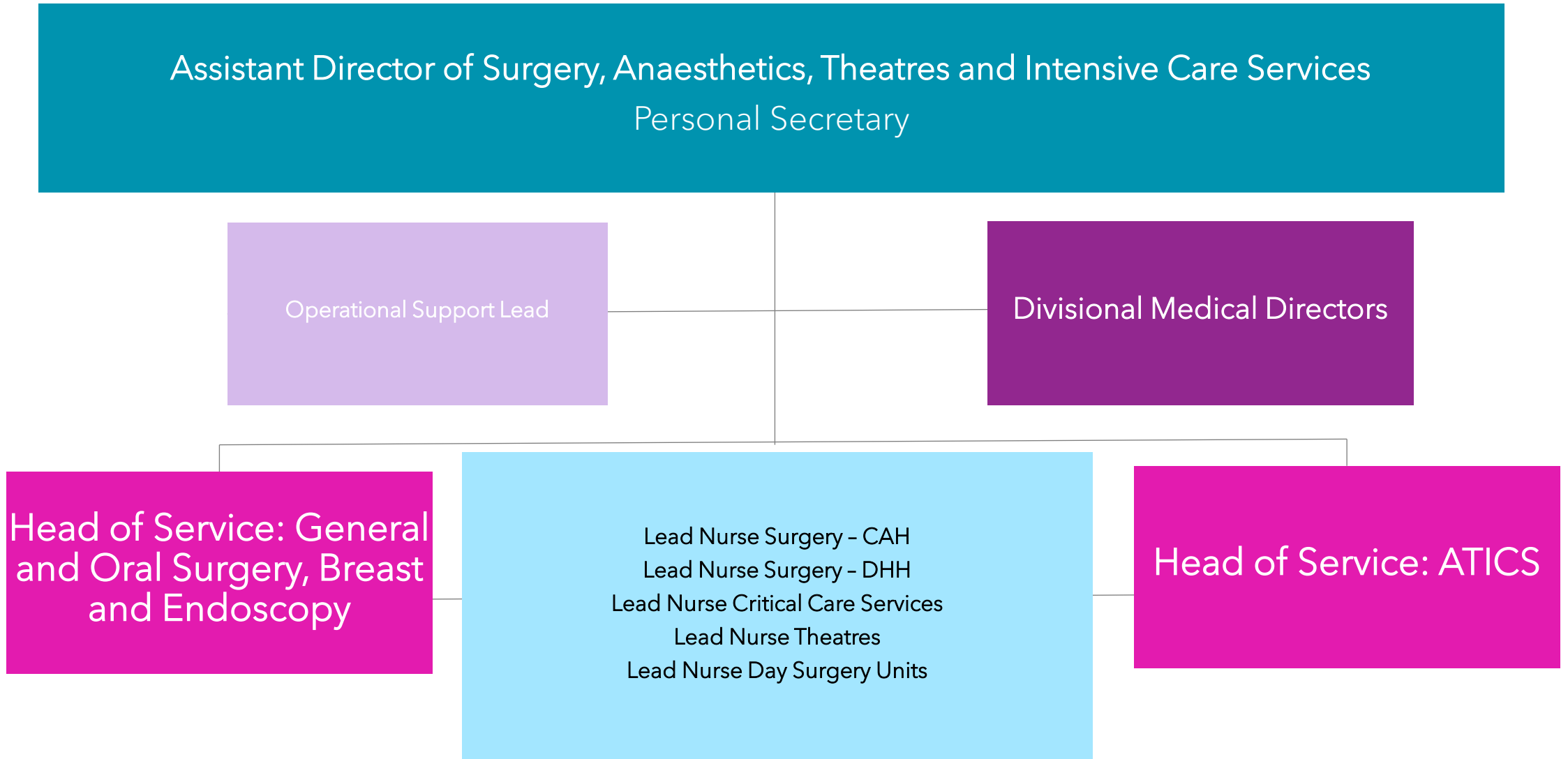
Directorate of Surgery and Clinical Services

Surgery and Outpatients



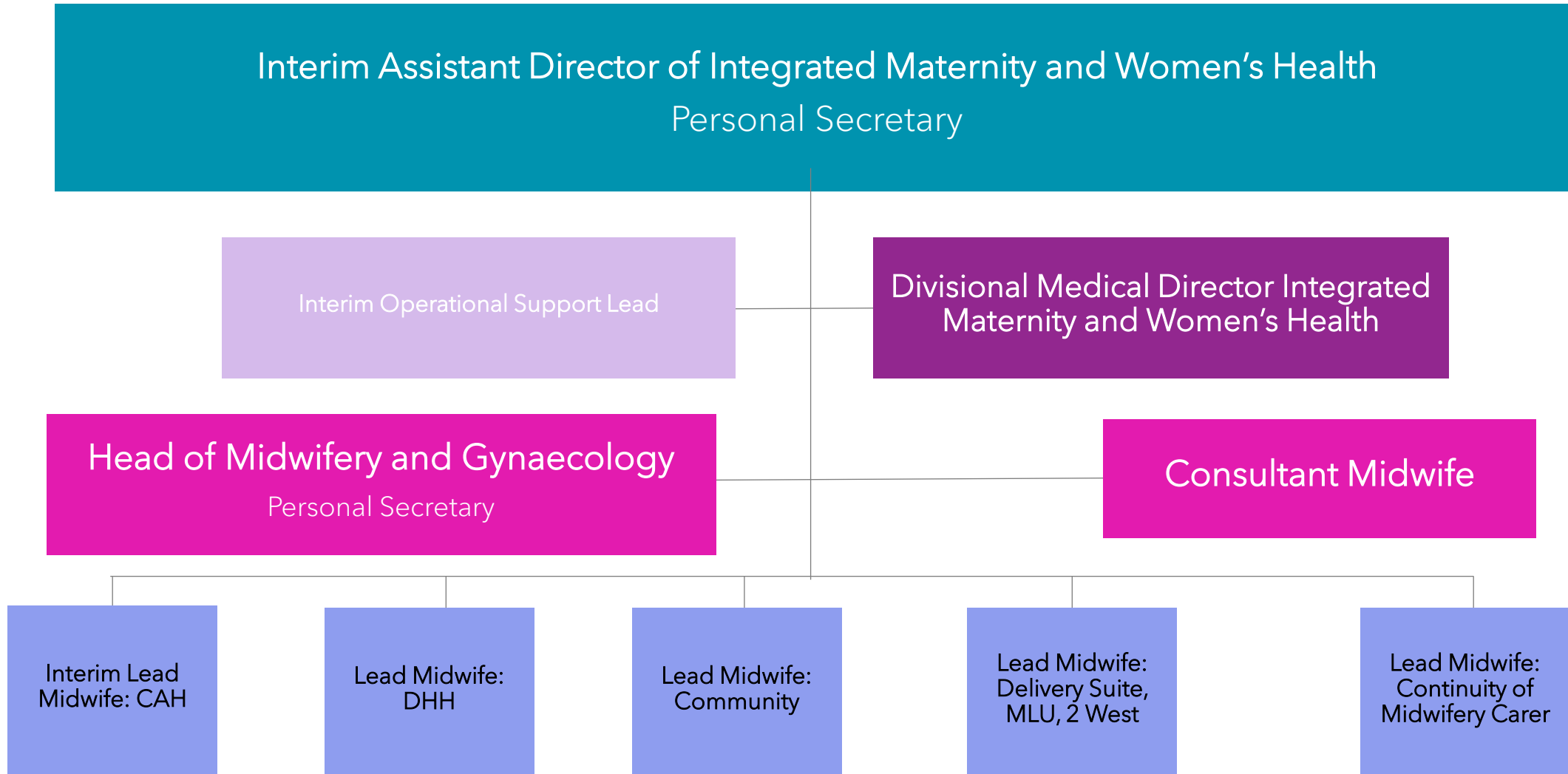
Directorate of Surgery and Clinical Services

Surgery, Anaesthetics, Theatres and Intensive Care Services



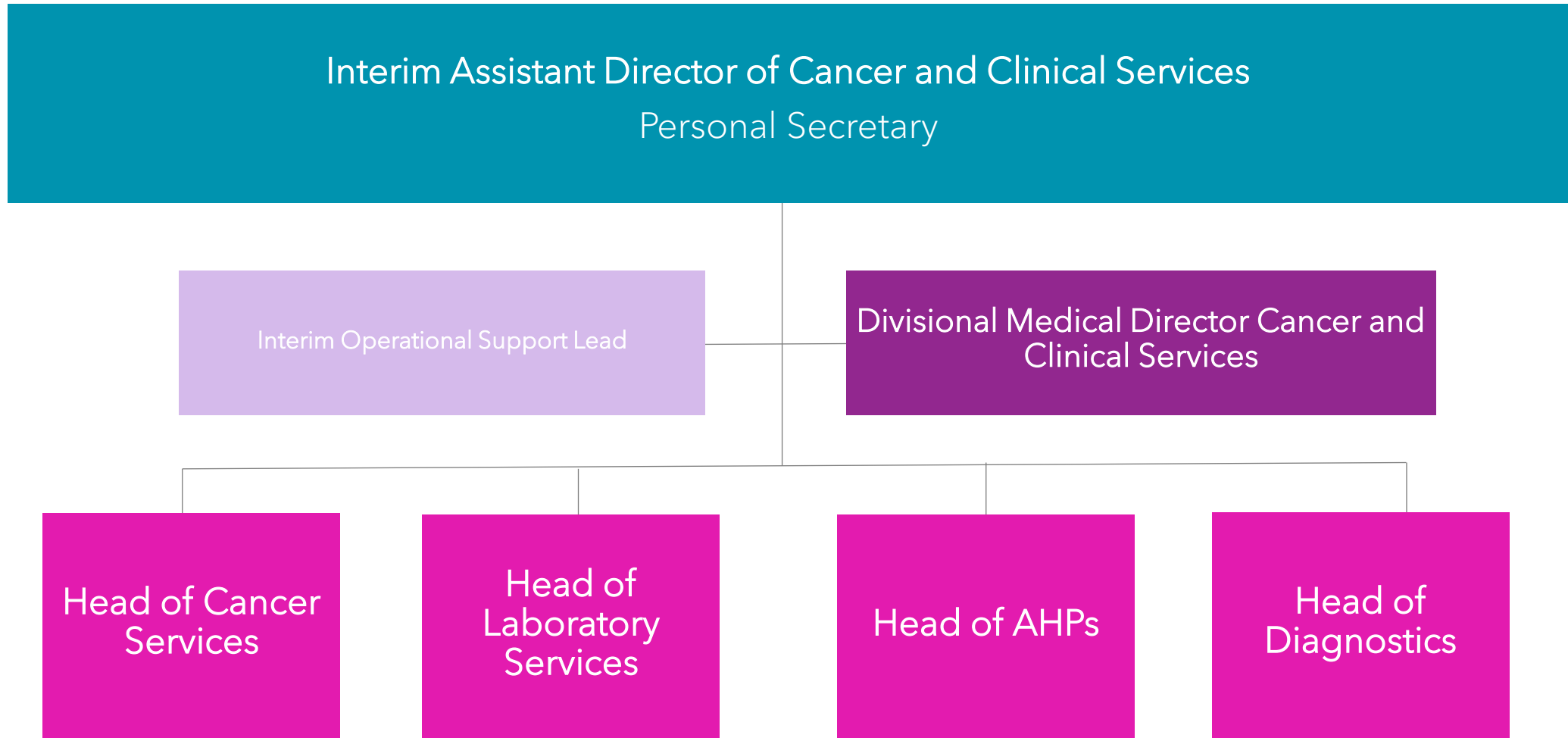
Directorate of Surgery and Clinical Services

Integrated Maternity and Women's Health



Directorate of Surgery and Clinical Services

Cancer and Clinical Services



Directorate of Medicine and Unscheduled Care



Directorate of Medicine and Unscheduled Care

Director of Medicine and Unscheduled Care

Personal Assistant

Interim Assistant
Director of
Respiratory,
Cardiology, Renal,
Rheumatology &
General Medicine

Assistant Director
of Unscheduled
Care

Interim Assistant
Director of Assistant
Director Medicine
Division Stroke &
Frailty, Endocrine &
Diabetes

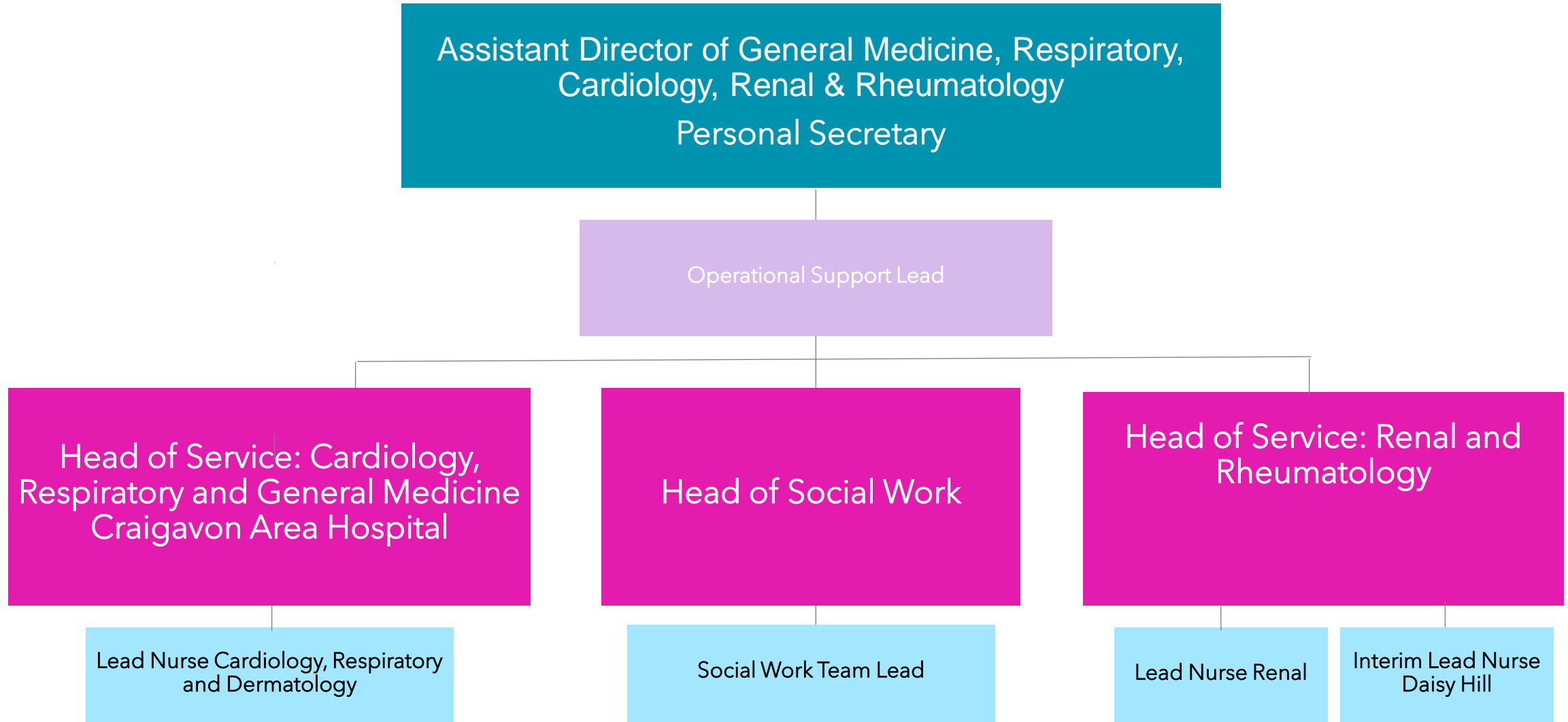
Chief Operating
Officer Daisy Hill
Hospital

Directorate
Quality Nurse
Lead

Head of Pharmacy
and Medicines
Management

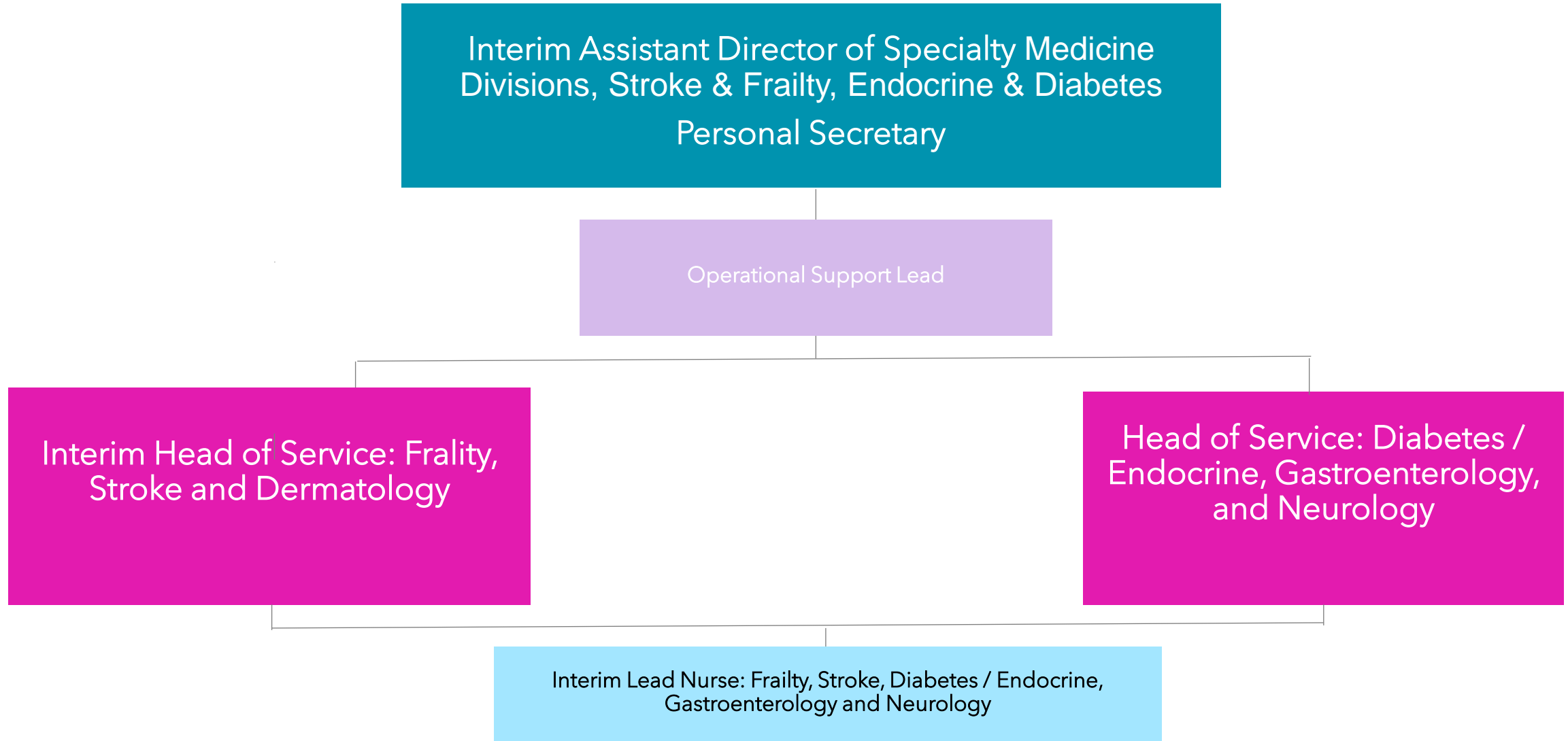
Directorate of Medicine and Unscheduled Care

Medicine



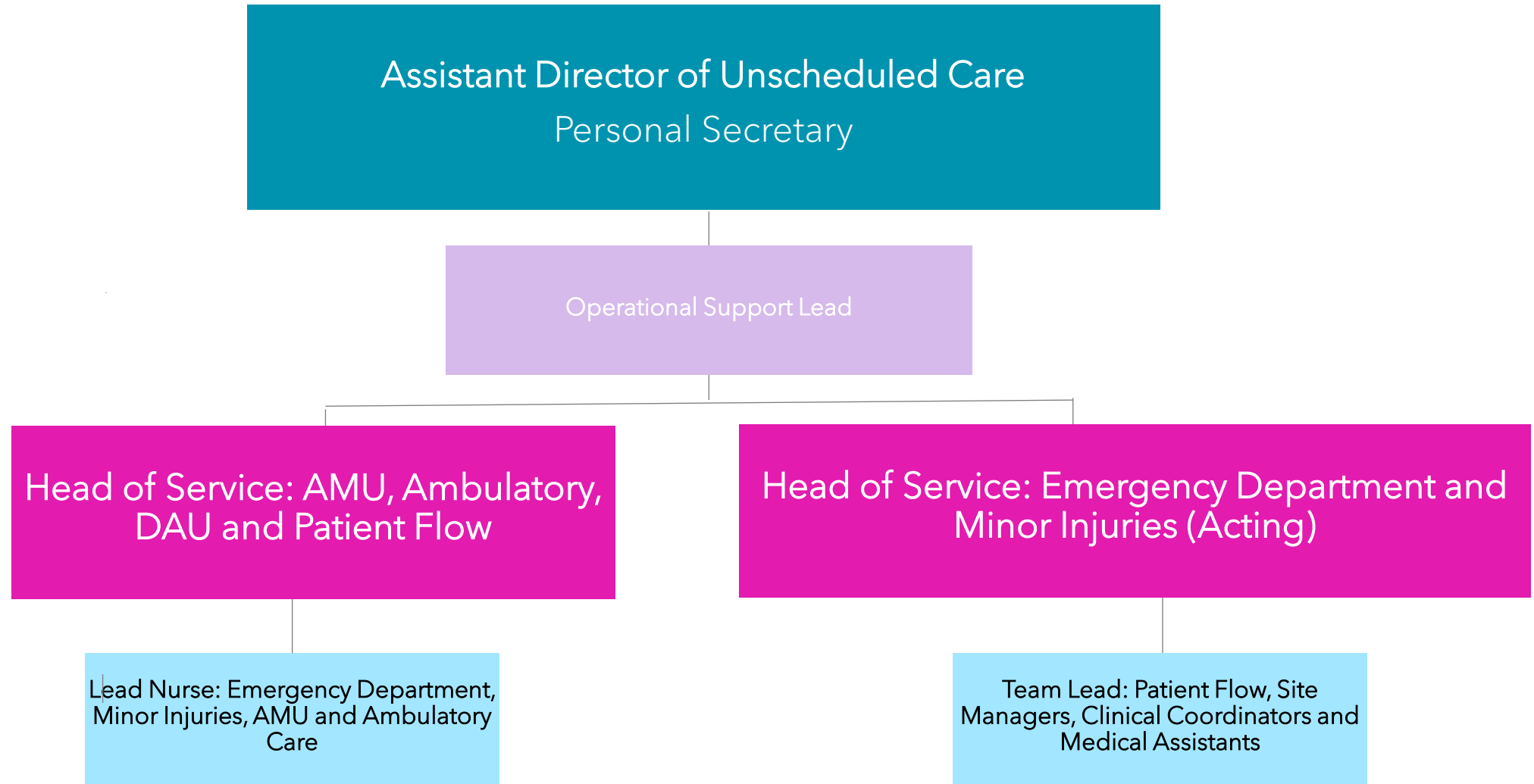
Directorate of Medicine and Unscheduled Care

Medicine



Directorate of Medicine and Unscheduled Care

Unscheduled Care



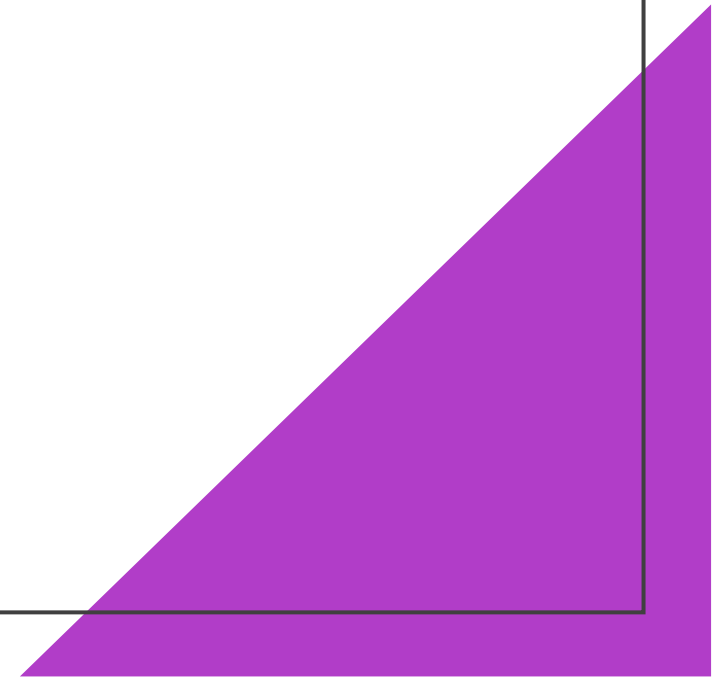
Directorate of Medicine and Unscheduled Care

Pharmacy And Medicines Management

Head of Pharmacy And Medicines Management



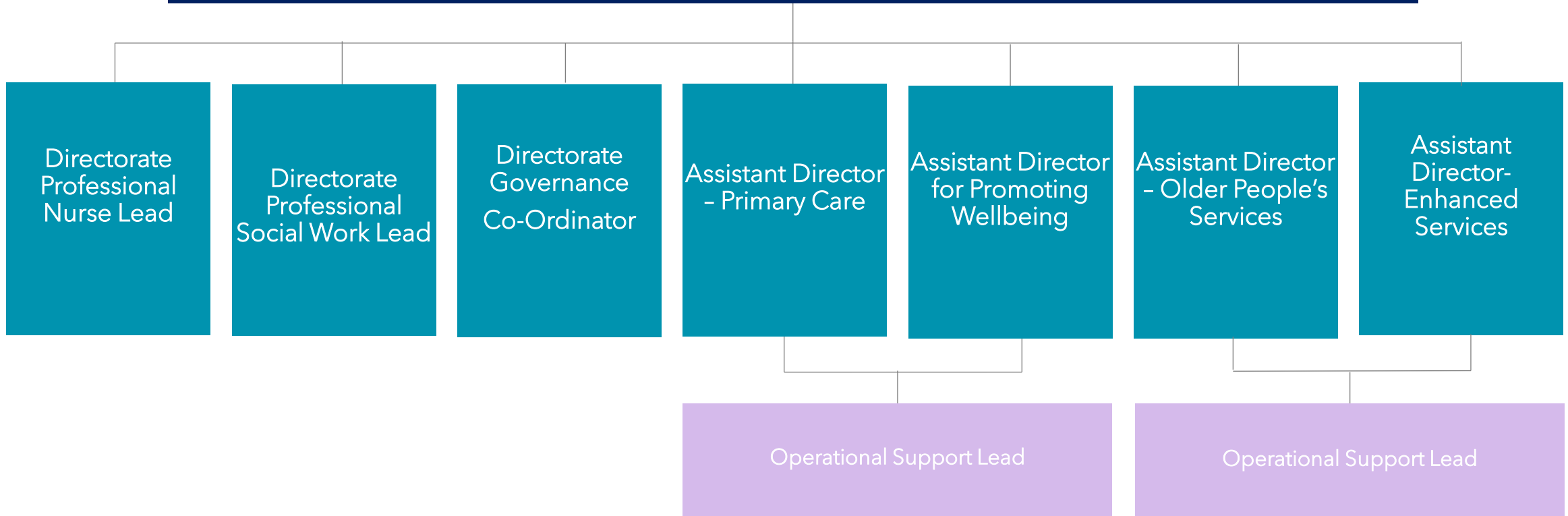
Directorate of Adult Community Services



Directorate of Adult Community Services

Director of Adult Community Services

Personal Assistant



Directorate of Adult Community Services

Enhanced Care Division



Directorate of Adult Community Services

Older People's Services

Assistant Director - Older People's Services
Personal Secretary

Health Administration

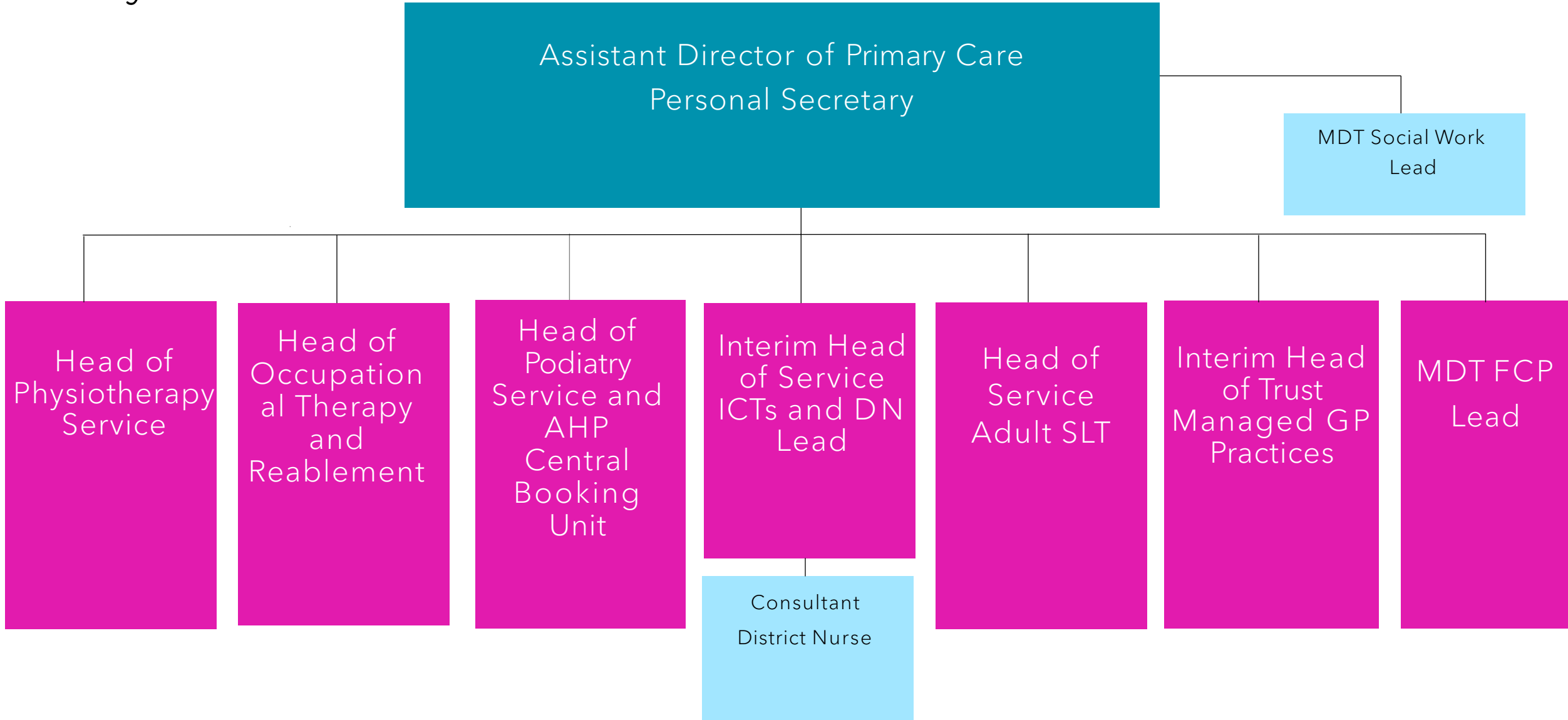
Head of Service Care
Home Support Team

(Interim)
Head of Day Care and
Statutory Residential
Care

Head of Home Care

Directorate of Adult Community Services

Primary Care Division



Directorate of Adult Community Services

Promoting Wellbeing

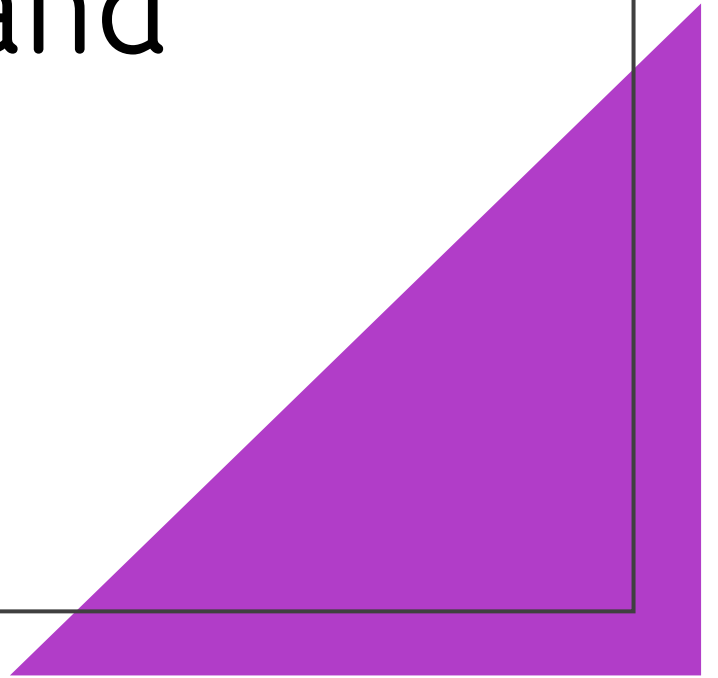


Directorate of Adult Community Services

Clinical and Social Care Governance Team



Directorate of Children and
Young People's Services and
Social Work



Directorate of Children and Young People's Services and Executive Director of Social Work

Director of Children and Young People's Services and Executive Director of Social Work
Personal Assistant

Divisional Medical Director

Assistant Director of Specialist Child Health and Disability

Assistant Director of Family Support and Safeguarding

Assistant Director Corporate Parenting

Assistant Director Social Work, Governance, Workforce Development and Training

Head of Planning

Finance

Assistant Director Human Resources

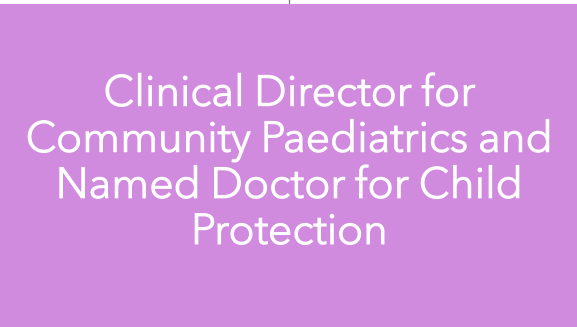
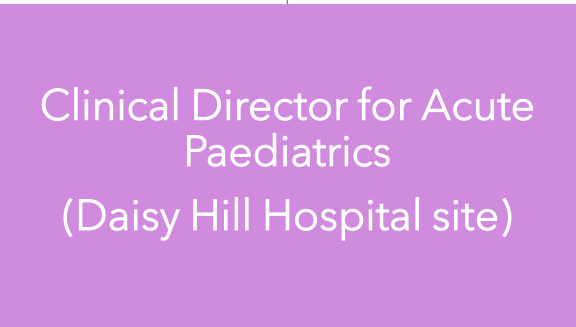
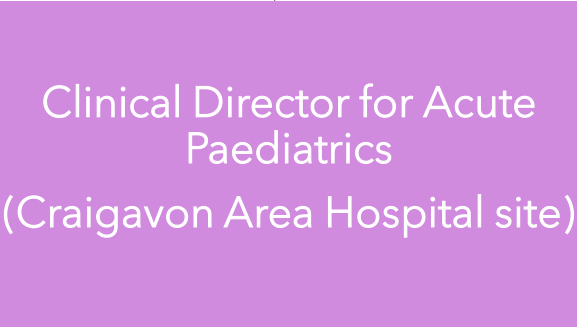
Informatics

Social Work and Social Care Encompass Lead

Clinical and Social Care Governance Coordinator

Directorate of Children and Young People's Services and Executive Director of Social Work

Enhanced Care Division



Directorate of Children and Young People's Services and Executive Director of Social Work

Specialist Child Health and Disability

Assistant Director – Specialist Child Health and Disability

Head of Acute Paediatrics
2 NNU
2 Paediatric wards
3 Ambulatory Services
6 Outpatient Services

Head of Community Paediatrics
CCN Service
Specialist Nursing Services – long term condition management Trustwide
SCHD Admin

Clinical Director / Head of Dental Services
9 Community Dental Clinics
General Anaesthetic
Dental Extraction Service
Special Care Dentistry
Comprehensive Care
Domiciliary Service
Epidemiology
Oral Health Promotion

Head of AHP Services, CDC and RISE
Trustwide Core AHP Services
AHP Surestart Services
Paediatric Wheelchair Services
Occupational Therapy Grants Services
School Based AHP Services
Trustwide CDC RISE Service

Head of CAMHS / Autism
Single Point of Entry team
3 Locality based CAMHS teams
1 ACT (Assessment Crisis team)
1 Community Intensive Treatment Service
3 Primary Mental Health teams
1 Intellectual Disability CAMHS Eating Disorder Team
1 Infant CAMHS Autism Service

Directorate of Children and Young People's Services and Executive Director of Social Work

Family Support and Safeguarding

Assistant Director – Family Support and Safeguarding:
Lead for Children's Safeguarding/Public Protection Service/ Domestic & Sexual Violence & Abuse

Head of Service Family Support and Safeguarding N&M

- Gateway Service Trustwide
- Family Intervention Teams N&M, Banbridge
- Family Support Hubs; Trust wide
 - Public Protection Service
 - CSE / ABE Lead

Head of Service Family Support and Safeguarding N&M

- Family Intervention Teams Craigavon, Lurgan & Portadown
- Early Years Service Trust Wide
- Court Welfare Service :Trust Wide
- Sure Starts: Trust wide

Head of Service Family Support and Safeguarding A&D

- Family Intervention Team A&D
 - Adolescent (YPP)/Youth Homeless Service: Trust wide
- Lead for Child Protection Practice Young Carers Lead
 - Signs of Safety Lead

Head of Public Health Nursing

- Health Visiting Service: Trustwide
- School Nursing Service: Trust wide
 - NINES : Trustwide
- Safeguarding Children's Nurse Service: Trust wide
- Family Nurse Partnership: Trustwide

Directorate of Children and Young People's Services and Executive Director of Social Work

Corporate Parenting

Assistant Director of Corporate Parenting

Scaffold Service

- 1 Senior
- 1 Associate
- 2 Specialist Therapists
- 3 Primary Mental Health Workers
- 1 Specialist Nurse CIC
- 1 Occupational Therapist

Head of Children's Residential Care

- 5 Therapeutic Homes
- Agency Decision Maker for Children
- 1 Residential Support Service

Head of Looked After Children

- 2x 8a Operational Managers
- 4 CIC Teams
- Concurrent Care Team
- Agency Decision Maker for Adults
- Permanence Panel
- Principal Practitioner for CIC
- Supported by: 1 CIC/CC Chair for 14 Plus cases

Head of 14+ Services

- 3 x 14+ Teams
- Community Living Support Team
- STAY Supported Lodgings
- Resource Panel
- Historic Abuse Inquiry
- Supported & Residential 'Move On' Accommodation

Head of Service

- 1 x Fostering and Adoption Recruitment and Promotion Team
- 1 x Inter-Country Adoption Team & post permanence service
- Adoption Panel
- Matching Panel
- Family Placement Assessment and support teams x 2
- Fostering panels

Head of Service Children with Disability Service

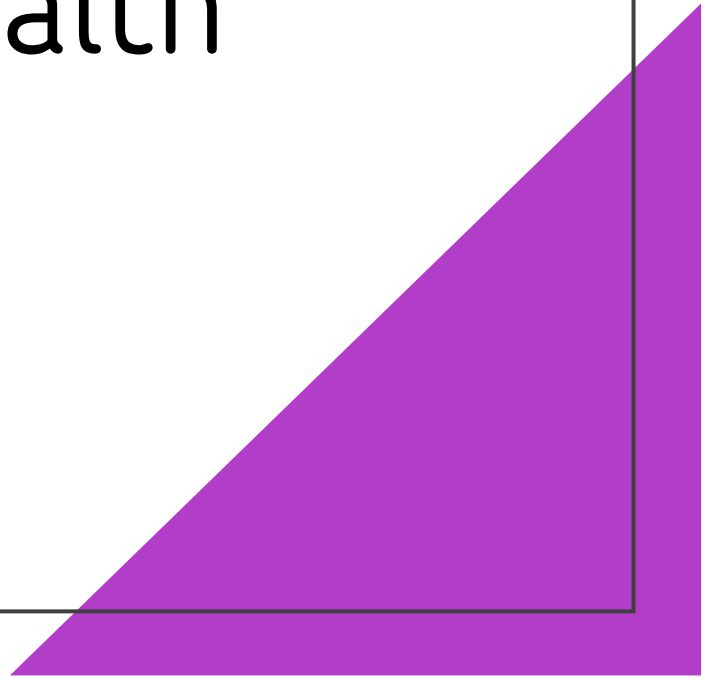
- Trustwide Short Breaks Services
- 2 Trustwide Short Breaks Units
- 1 Long Term Residential Home
- 1 Trustwide Transition Team
- 3 Locality based Social Work Teams
- Short Breaks Contracts inc Vol Short Breaks Unit Community Access Team

Directorate of Children and Young People's Services and Executive Director of Social Work

Social Work, Governance, Workforce Development and Training



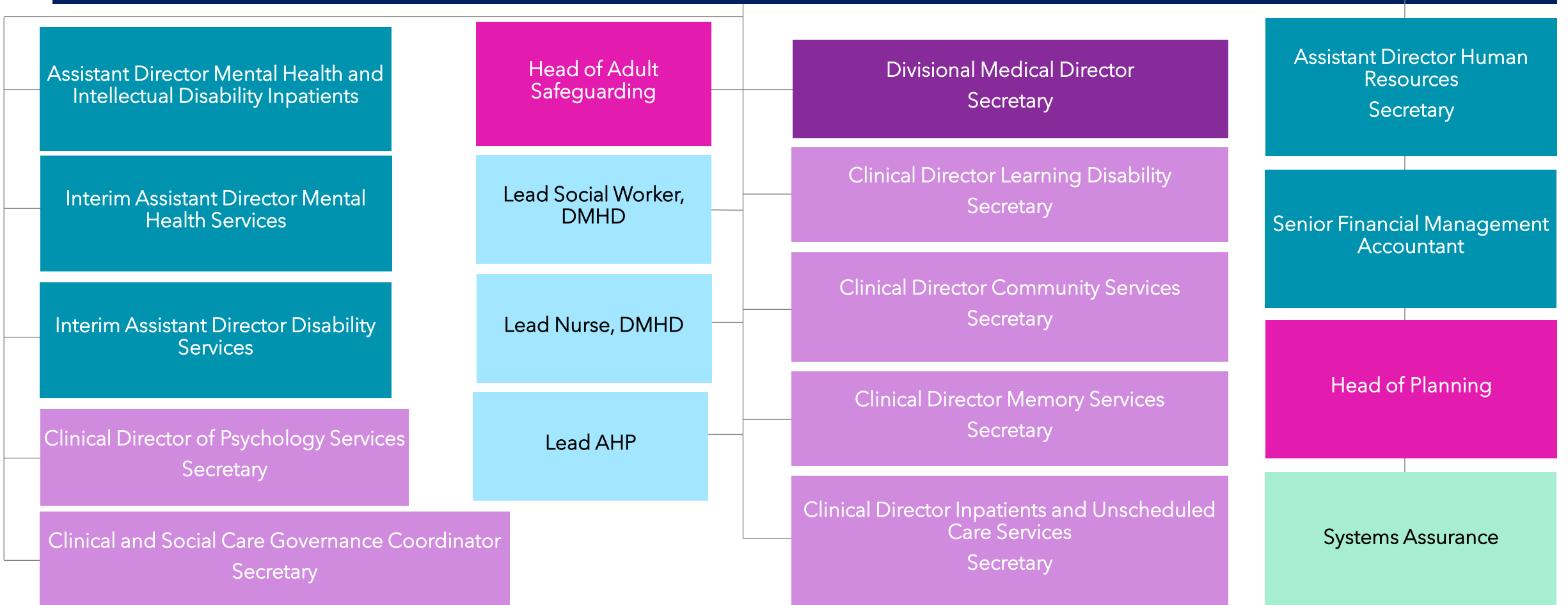
Directorate of Mental Health and Disability



Directorate of Mental Health and Disability

Director of Mental Health and Disability

Personal Assistant



Directorate of Mental Health and Disability

Assistant Directors and Heads of Service



Directorate of Mental Health and Disability

Mental Health Division

Interim Assistant Director Mental Health Services
Personal Secretary

Unscheduled
Care Services

Head of Service
CMHS West

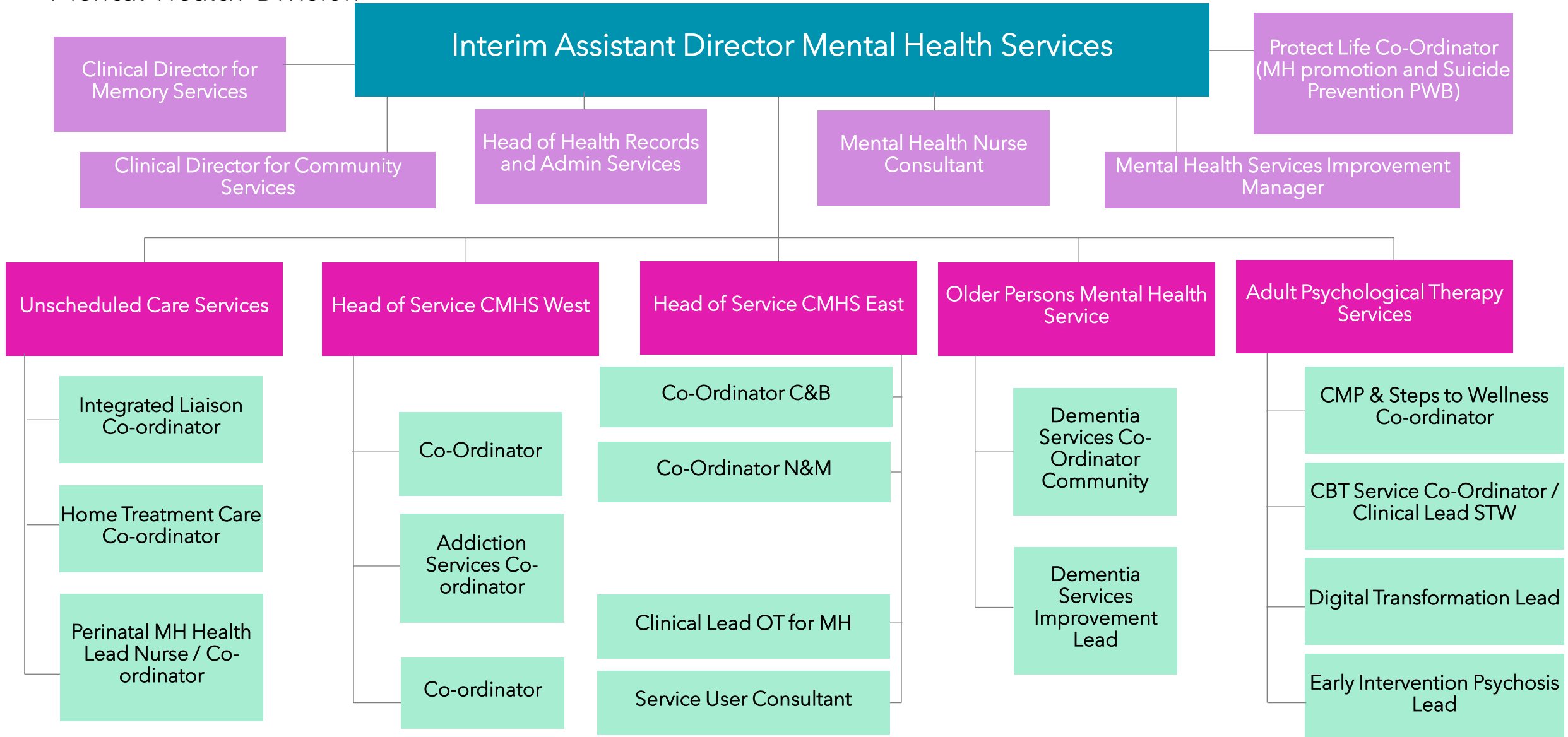
Head of Service
CMHS East

Older Person's
Mental Health
Services

Adult
Psychological
Therapy Services

Directorate of Mental Health and Disability

Mental Health Division



Directorate of Mental Health and Disability

Mental Health and Intellectual Disability Inpatients Division

Assistant Director Mental Health and Intellectual Disability Inpatients

Head of Service Mental Health and Learning Disability Inpatients

TZS Towards Zero
Suicide Co-ordinator

Occupational Therapy
Team Lead

Dementia Co-Ordinator

Lead Nurse, Mental
Health

Lead Nurse, Dorsy Unit /
Rosebrook

Social Work Lead

Mental Health Bed
Capacity Network Co-
Ordinator

Occupational
Therapy Team:
Including Dorsy

Gillis Ward

Willows Ward

Physiotherapy
SALT

Silverwood Ward

Bronte Ward

Cloughmore Ward

Smoking
Cessation: Dietetics

Rosebrook

Dorsy Unit

Dorsy Behaviour
Therapist

Dorsy SALT

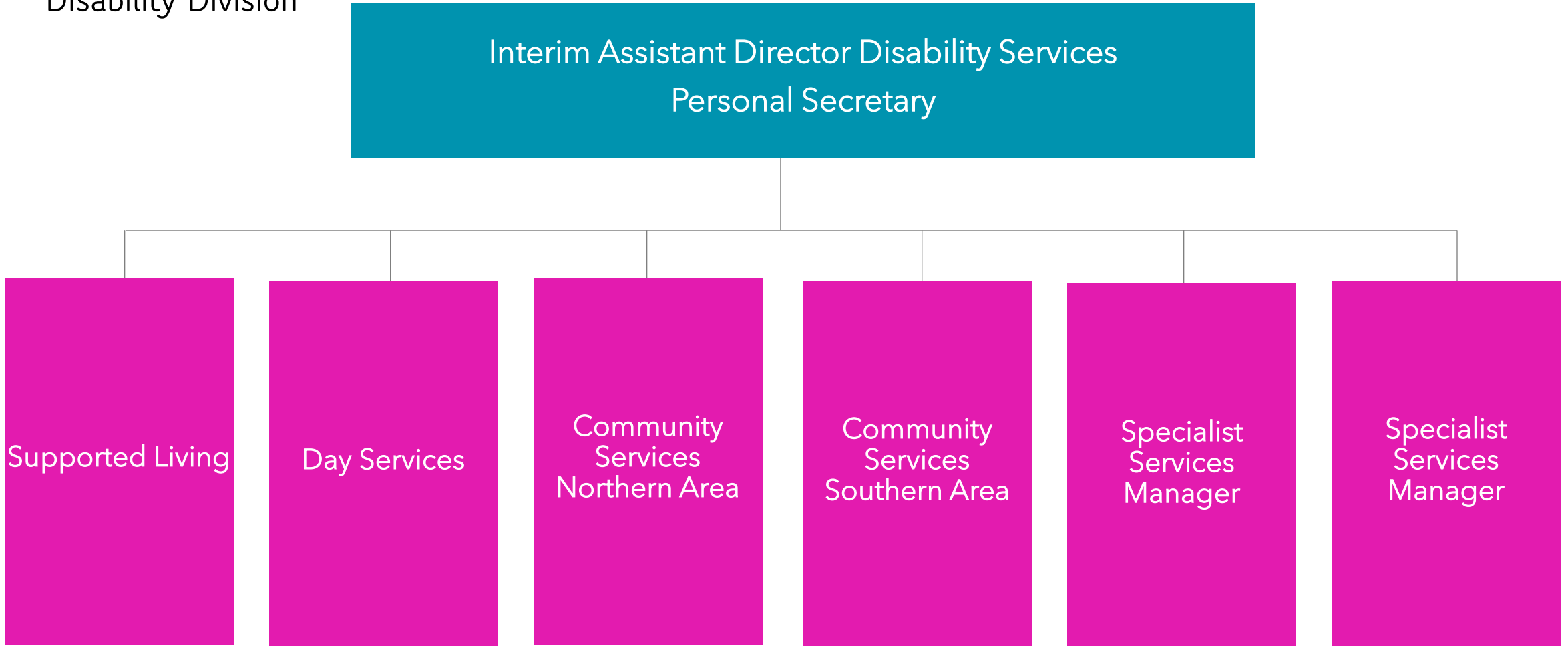
Dorsy Physiotherapist

Social Work Team,
including Dorsy

Patient Flow Team
Night Co-ordinators

Directorate of Mental Health and Disability

Disability Division



Directorate of Mental Health and Disability

Disability Division

Interim Assistant Director Disability Services

Learning Disability Nurse Consultant

Day Services

Day Care Co-ordinator

Disability Day Care N&M

Disability Day Care A&D

Disability Day Care C&B

All Disability Independent Sector Day Care Contracts

Supported Living

Supported Living Co-ordinator

Supported Living Disability A&D (Granville)

Supported Living Disability A&D and C&B (Orchard, Lilburn and Bowens)

Community Services

Supported Living Disability N&M (Ardaveen and Teach Sona)

Supported Living Disability C&B (Glanree and Shanlieve)

All Disability Independent Sector Supported Living Contracts / Residential Contracts

Physical Disability A&D and C&B
Learning Disability A&D Disability Social Work
Adult Safeguarding Lead Professional Contracts

Learning Disability N&M and C&B Physical Disability N&M Transition Team
Contracts AHP Professional Lead

Specialist Services

Forensic, Crisis Response/Home Treatment, Epilepsy Team, Behaviour Support Team, Complex Healthcare Team, Day Opportunities, All associated Independent Sector Contracts for Day Ops

Sensory Disability Teams, Brain Injury, Short Breaks, Carer Consultants, Lead for Direct Payments & SDS Transport Services, All associated Independent Sector Contracts

Additional Responsibilities

Self Directed Support Lead

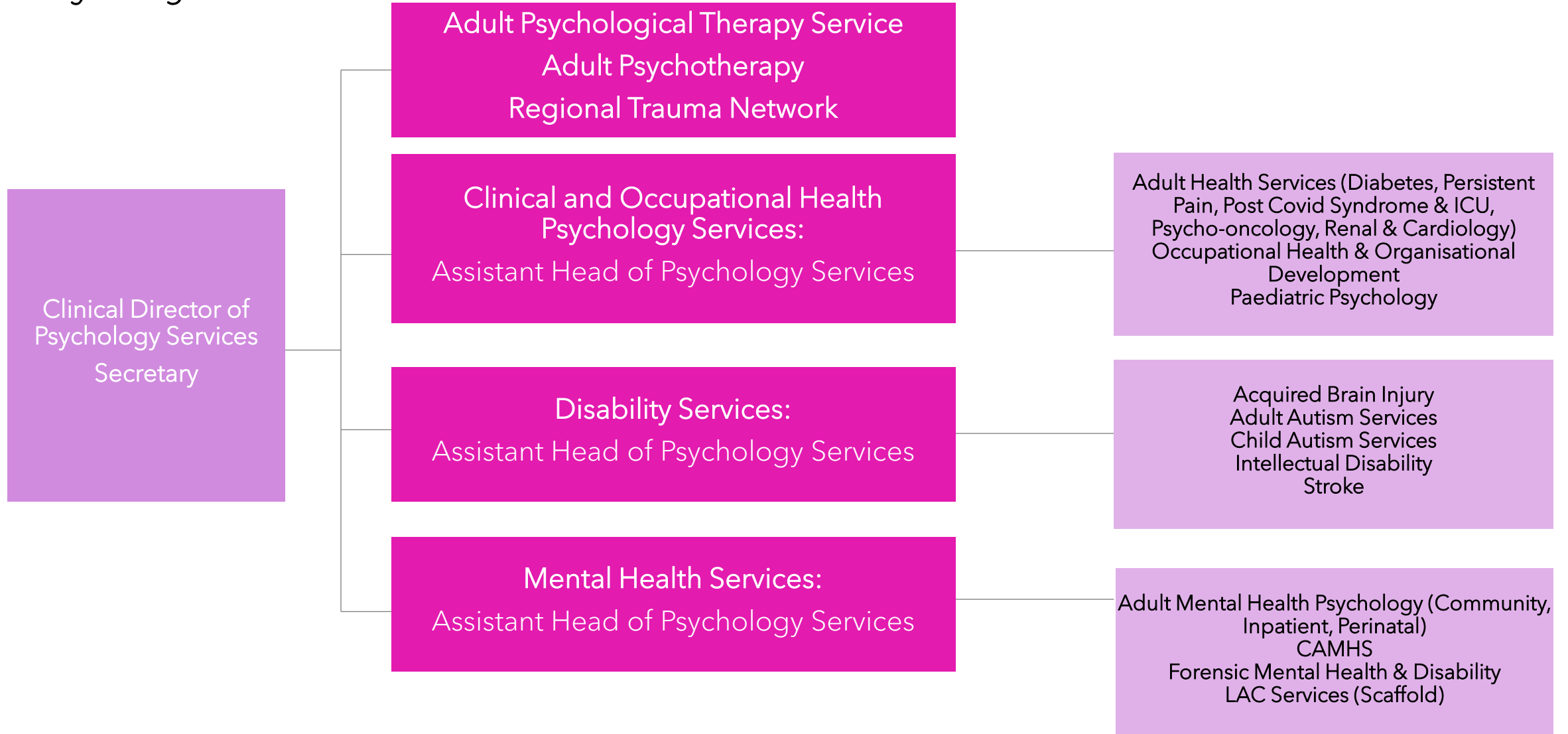
Wheelchair Services

Hoists, Lifts and Minor Housing

DMHD Domiciliary Care

Directorate of Mental Health and Disability

Psychological Services:



Directorate of Mental Health and Disability

Lead Social Worker

Directorate Lead Social Worker, MHD

MCA Head of Service:

MCA Implementation Lead:

STFAs x 3: Band 7

Band 7 Prof ASW and AO X5:

Administration Manager Band 6:

ASW Lead / MH Social Work Co-Ordinator

Band 7 Prof ASW
1 ASW Bank

Think Family Lead

Recovery College Manager

Peer Lead training Acting Band 5 x2

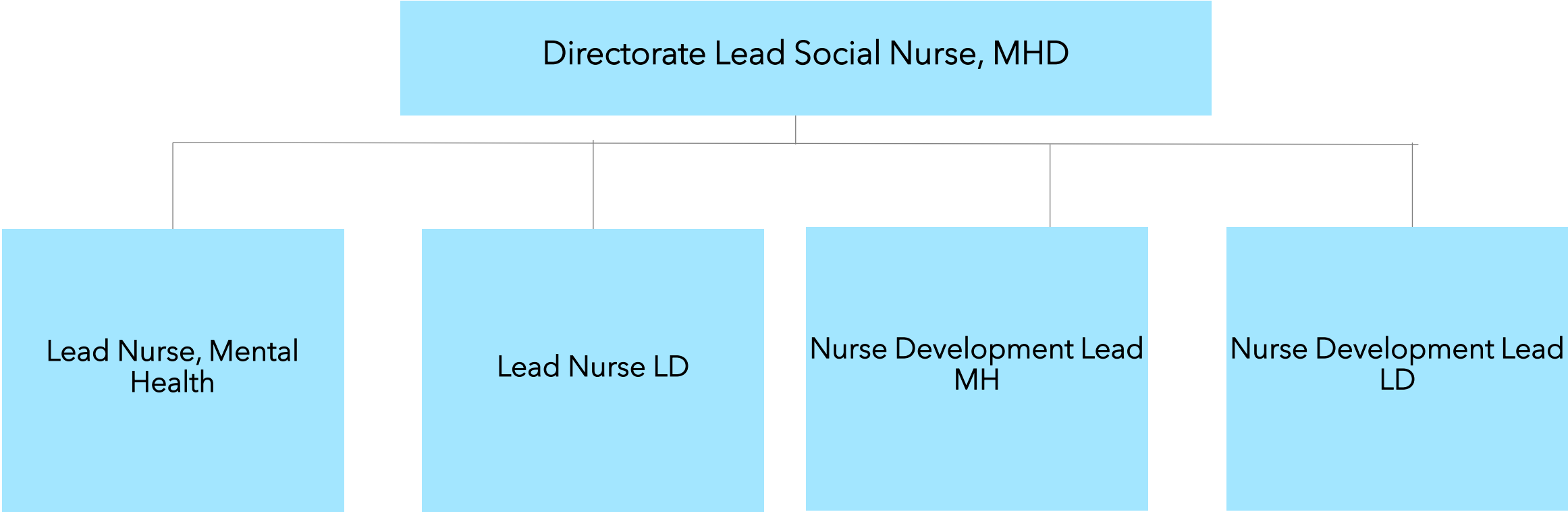
Peer Trainers Band 4

8A Social Work Lead - Disability

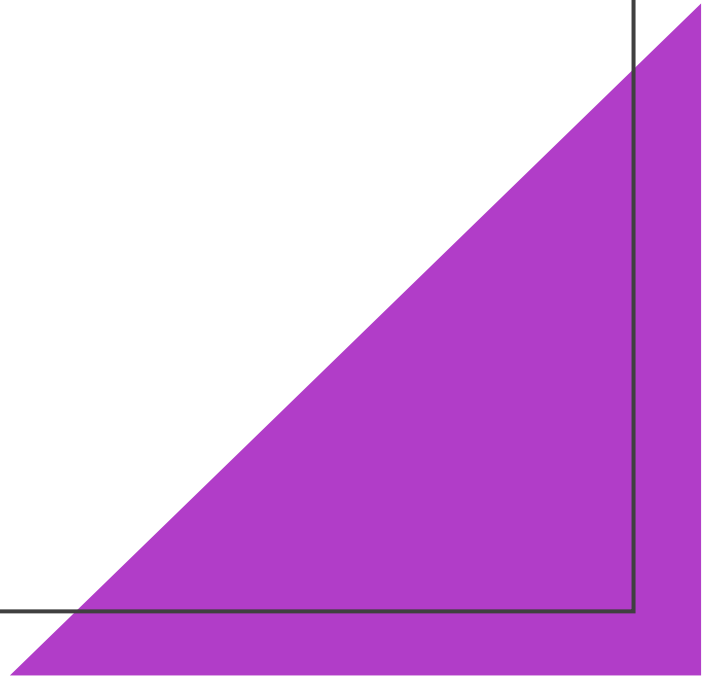
Monitoring Office
Bank Monitoring Officer

Directorate of Mental Health and Disability

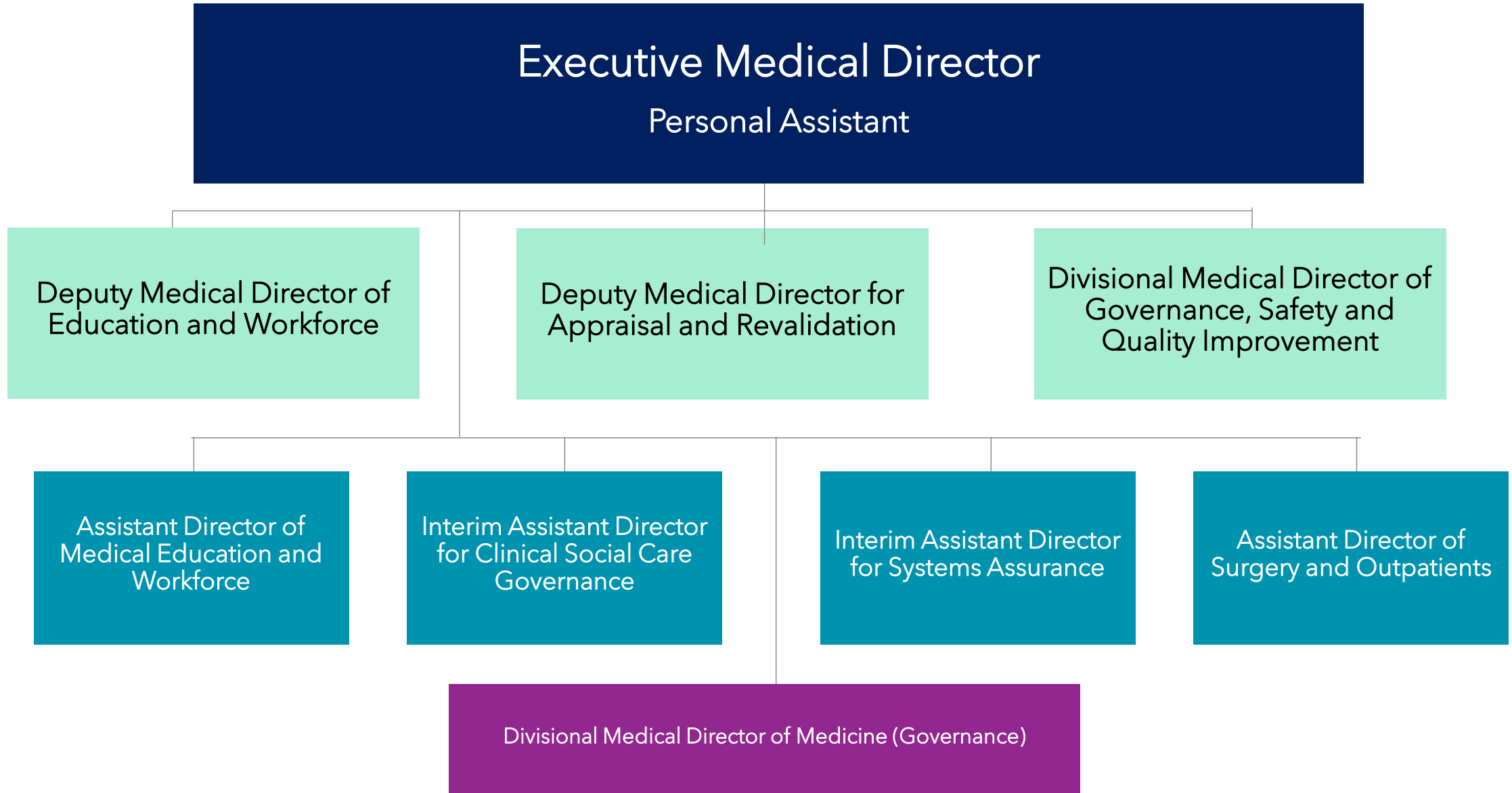
Lead Nurse



Medical Directorate



Medical Directorate



Directorate of Nursing, Midwifery,
AHPs, Functional Support Services
& Infection Prevention & Control



Directorate of Nursing, Midwifery, AHPs, Functional Support Services & Infection Prevention & Control

Interim Executive Director of Nursing, Midwifery, AHPs and Functional Support Services
Personal Assistant

Assistant Director of Nursing, Midwifery Workforce and Education
Personal Assistant

Interim Assistant Director of Nursing, Patient Safety, Quality & Experience
Personal Assistant

Assistant Director of AHP Governance, Workforce and Training
Personal Assistant

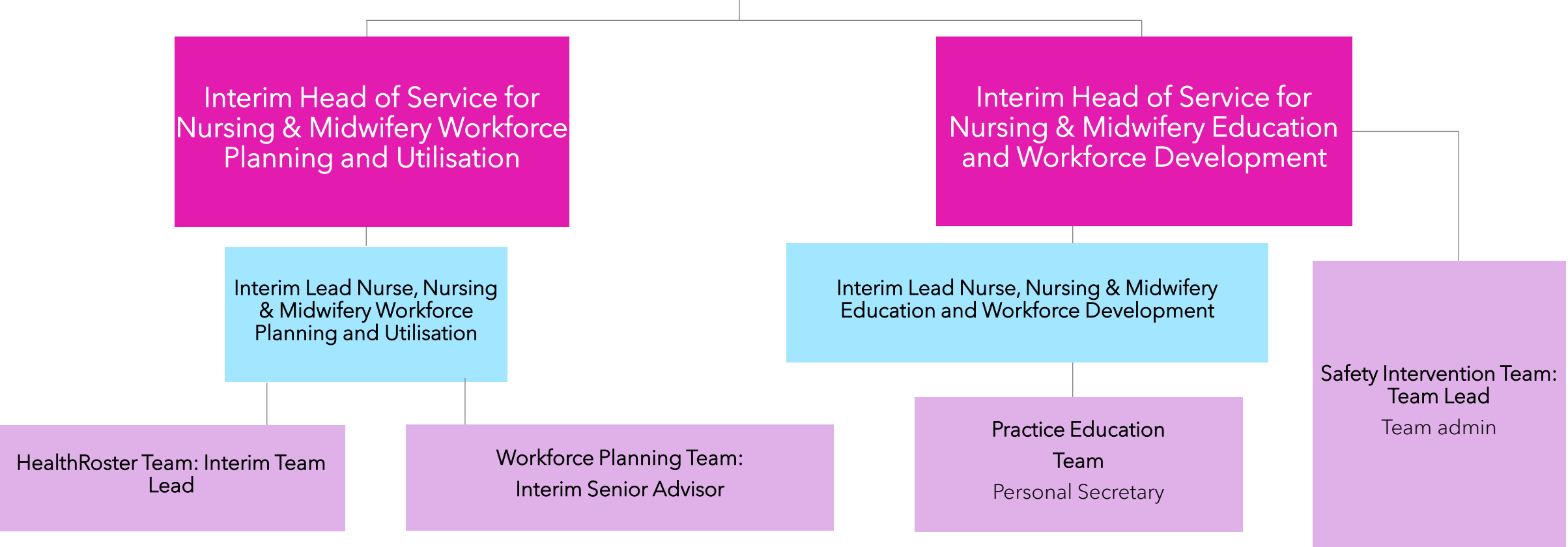
Assistant Director of Functional Support Services
Personal Assistant

Assistant Director of Infection, Prevention and Control

Directorate of Nursing, Midwifery, AHPs, Functional Support Services & Infection Prevention & Control

Workforce & Education

Assistant Director of Nursing and Midwifery Workforce and Education
Personal Assistant



Directorate of Nursing, Midwifery, AHPs, Functional Support Services & Infection Prevention & Control

Nursing Patient Safety, Quality and Experience

Interim Assistant Director of Nursing and Midwifery for Patient Safety, Quality and Experience
Personal Assistant

Head of Nursing & Midwifery
Patient Experience & Quality
Improvement

Bereavement Coordinator

Head of Nursing Patient Safety and
Quality of Care

Interim In-Patient Falls
Coordinator

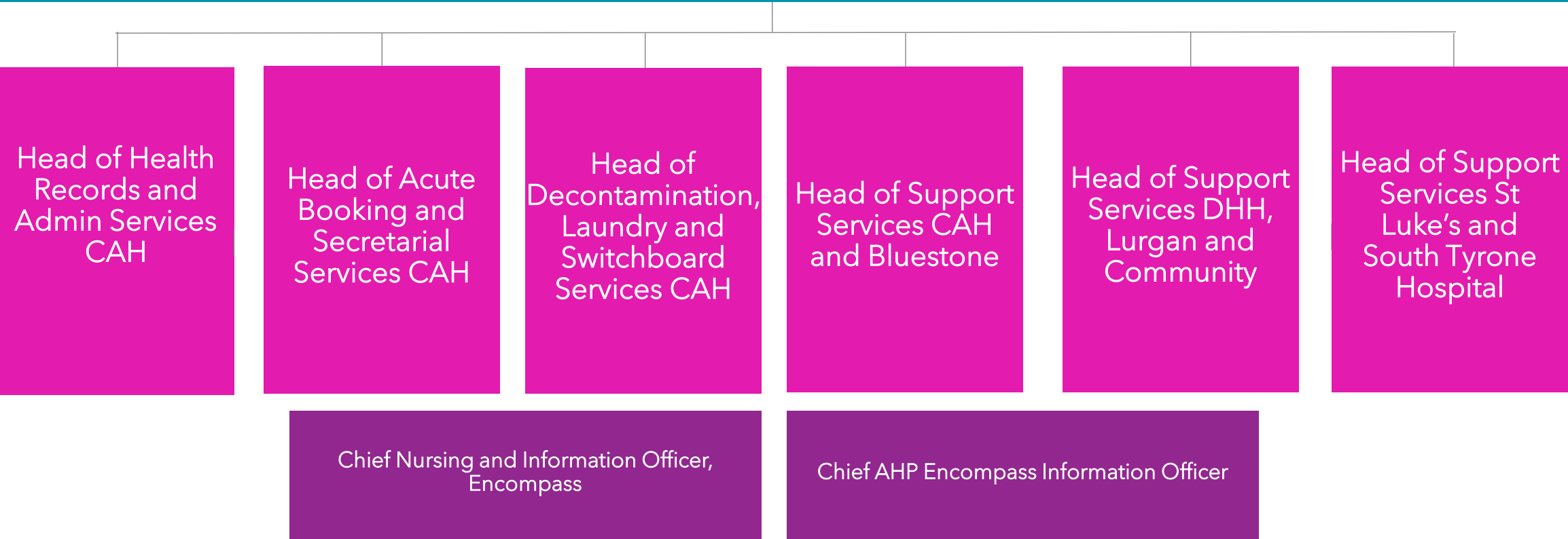
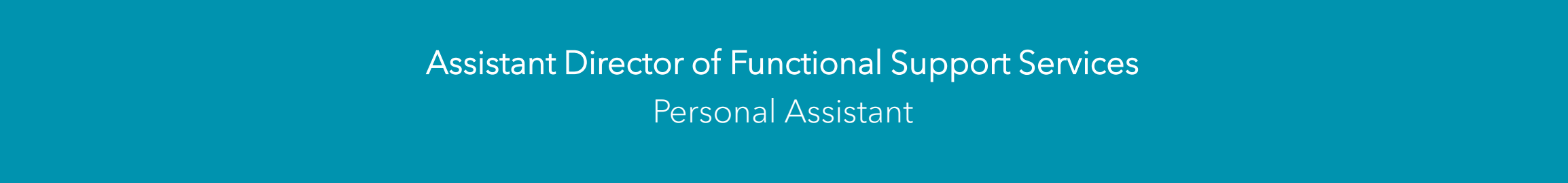
Patient Experience
Team

Lead Nurse for Nursing, Patient Safety and Quality
of Care

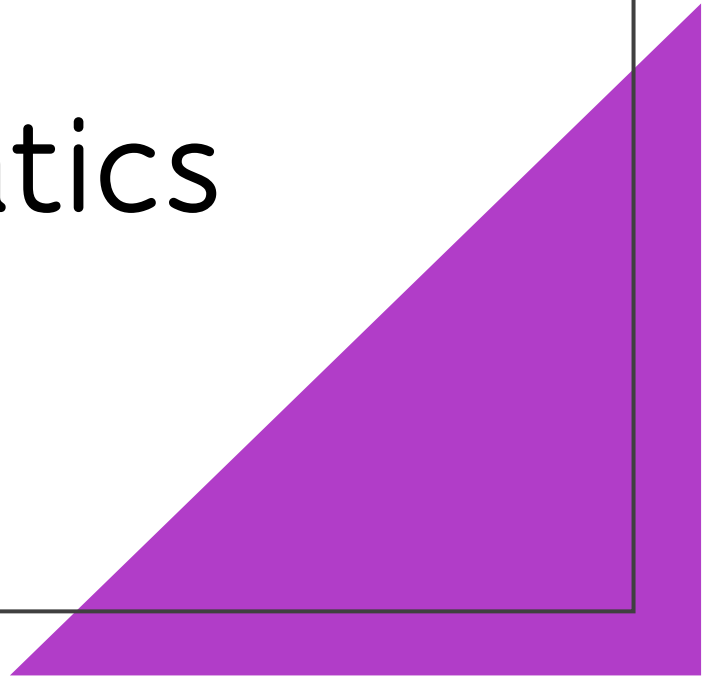
Patient Safety and Quality of Care Team

Directorate of Nursing, Midwifery, AHPs, Functional Support Services & Infection Prevention & Control

Functional Support Services



Directorate of Planning, Performance and Informatics



Directorate of Planning, Performance and Informatics

Director of Planning, Performance and Informatics
Personal Assistant

Assistant Director of
Corporate Planning

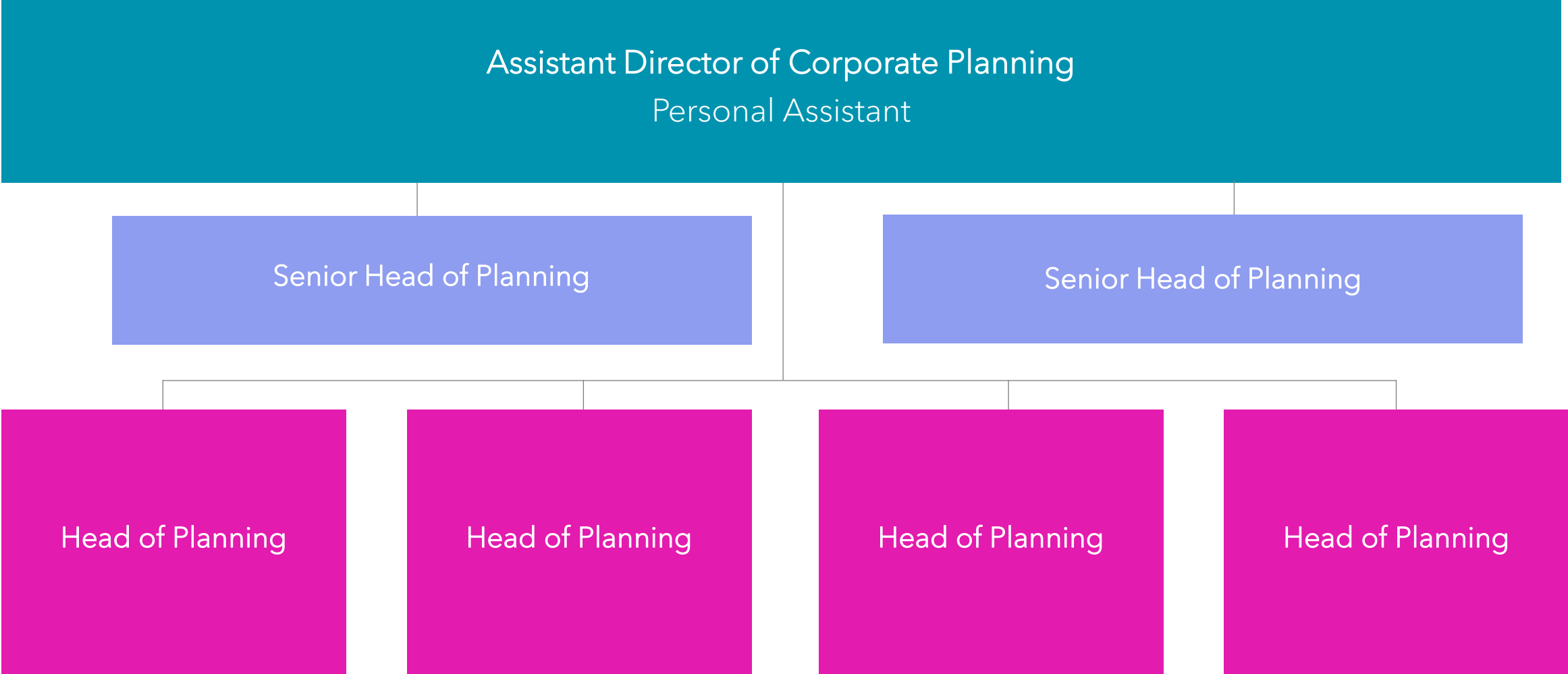
Assistant Director of
Performance Improvement
and Contract Management
(Social Care and Gov)

Interim Assistant Director of
Digital Services

**Interim Assistant Director of
Informatics**

Directorate of Planning, Performance and Informatics

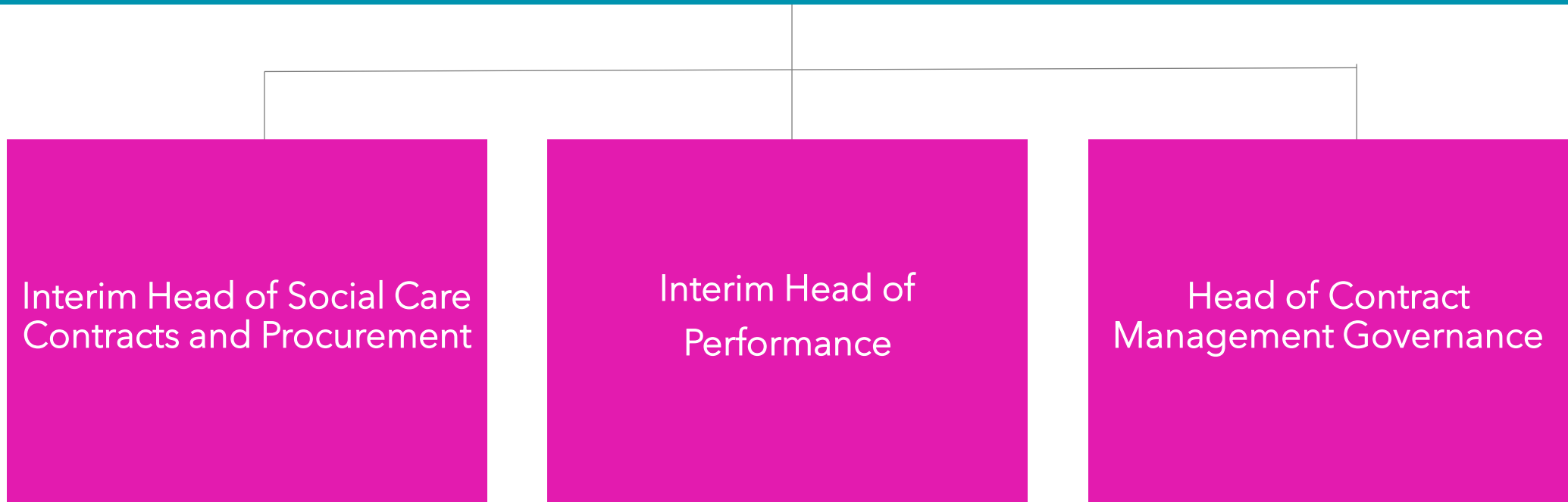
Corporate Planning



Directorate of Planning, Performance and Informatics

Performance Improvement and Contract Management (Social Care and Gov)

Assistant Director of Performance Improvement and Contract Management (Social Care and Gov)
Admin Support



Directorate of Planning, Performance and Informatics

Informatics

Interim Assistant Director of Informatics
Informatics Administrator

Acting Head of Information
and Data Quality

Head of Information
Governance

Directorate of Planning, Performance and Informatics

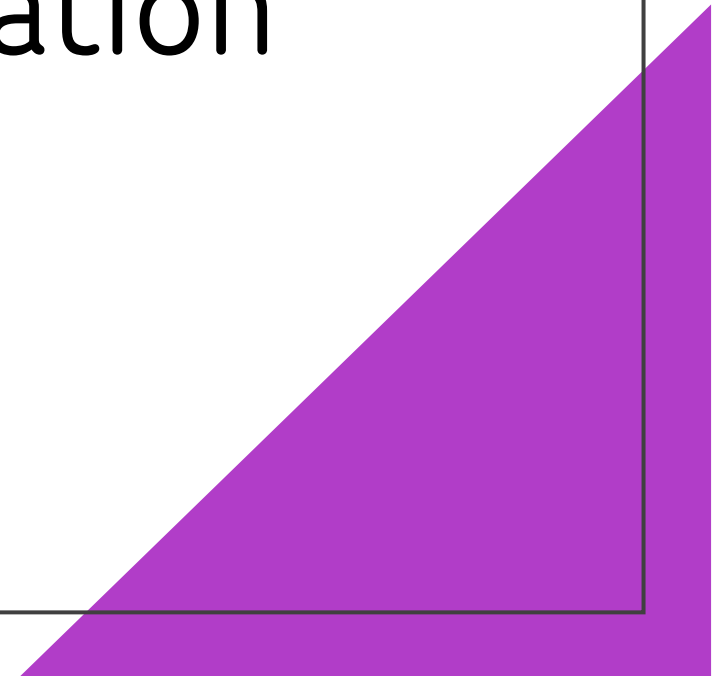
Digital Services

Assistant Director of Digital Services
Digital Administrator

Head of Information Technology

Head of Technology Innovation

Directorate of Transformation and Improvement



Directorate of Transformation and Improvement

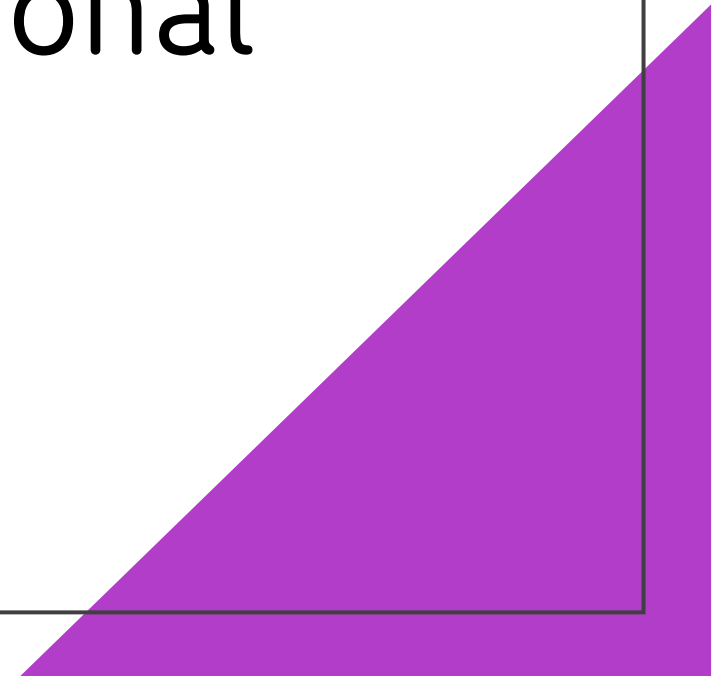
```
graph TD; A[Director of Transformation and Improvement] --> B[Assistant Director of Transformation]; A --> C[Assistant Director of Learning and Reform];
```

Director of Transformation and Improvement

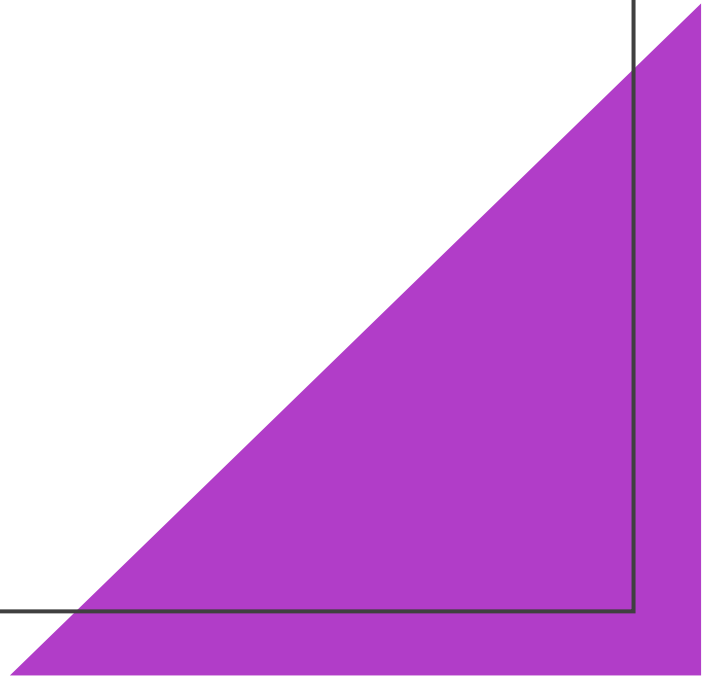
Assistant Director of Transformation

Assistant Director of Learning and Reform

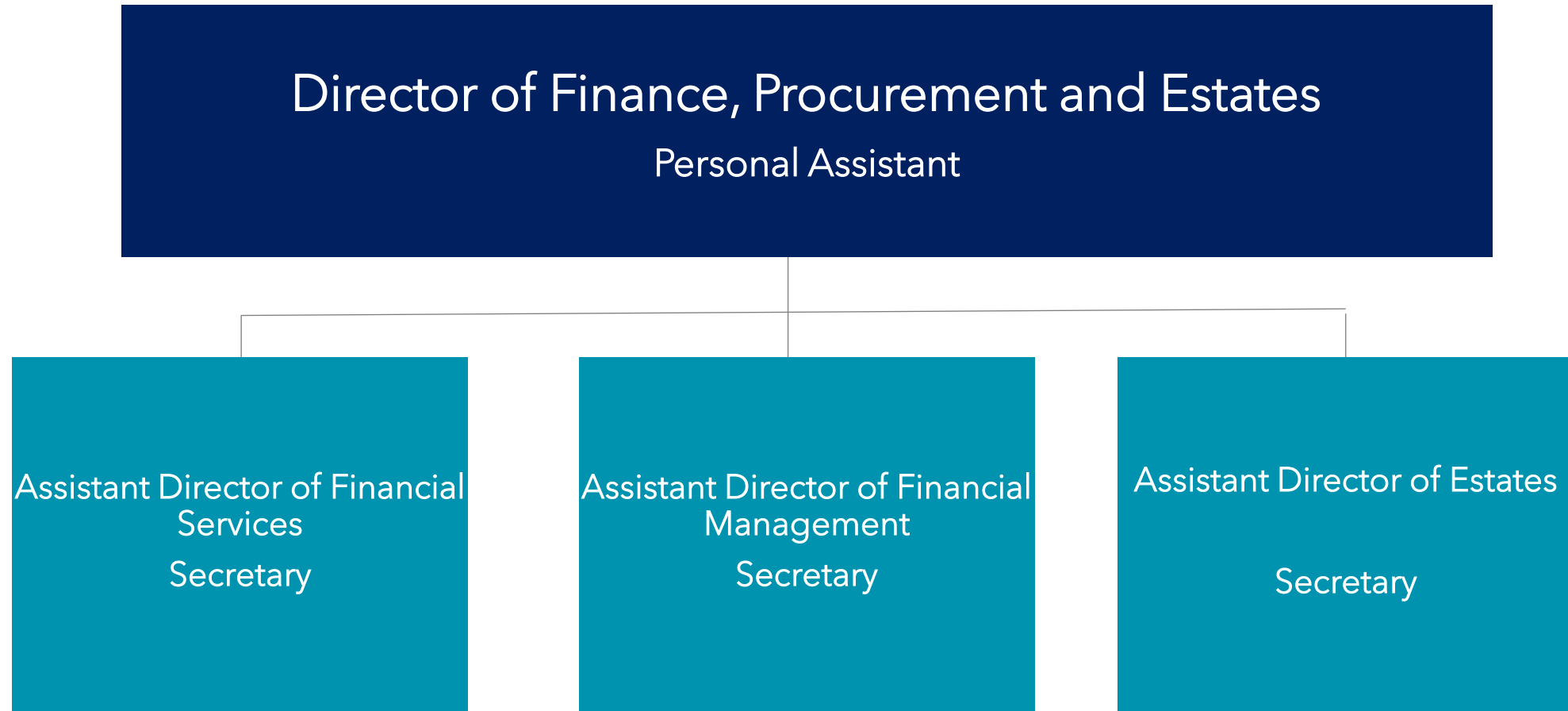
Directorate of Human
Resources and Organisational
Development



Directorate of Finance, Procurement and Estates



Directorate of Finance, Procurement and Estates



Directorate of Finance, Procurement and Estates

Financial Services

Assistant Director of Financial Services
Secretary

Head of Financial Services

(Acting) Head of Financial
Accounting and Systems

Corporate Financial
Accountant / Fraud
Liaison Officer

Procurement and Supply
Chain Manager

Directorate of Finance, Procurement and Estates

Financial Management

Assistant Director of Financial Management
Secretary

Senior Financial Management Accountant:
Mental Health and Disability Services

Senior Financial Management Accountant:
Surgery and Elective Care/ ATICS, Functional Support Services, Pharmacy

Senior Financial Management Accountant:
MUSC, Integrated Maternity & Women's Health / Cancer & Clinical Services, Elective Care Reform / WL Initiative)

Senior Financial Management Accountant:
Older People and Primary Care and Estates

Senior Financial Management Accountant:
Children and Young People's Services and Corporate Directorates

Senior Financial Management Accountant:
Capital, Costing and Resource Utilisation

Senior Financial Management Accountant:
Corporate Investment and Reporting

Directorate of Finance, Procurement and Estates

Estates

Assistant Director of Estates
Personal Assistant

Head of Estates
Administrative
Services

Head of Estates
Development
Services

Head of Medical
Technical Services

Head of Specialist
Services

Head of Estates
Operations