

# Primary Care Multi-Disciplinary Team



Newsletter Issue 3—November 2020

## Direct Access to Social Work Practitioners in General Practice

Southern Trust is working in partnership with Newry and District GP Federation to roll out the Primary Care Multidisciplinary Teams initiative in General Practice which aims to promote the physical, mental and social wellbeing of local communities.

## Primary Care MDT Social Work Lead Appointed

Martina McAloon was appointed Social Work Lead for the Primary Care MDT in June 2020. Martina has over 20 years experience in Family and Child Care Services within the Trust.

*"It is my vision that Social Work in Primary Care will work collaboratively to support and promote the health and wellbeing of the patient population. Social Work has its roots in an 'empowering model' of working with people, families and communities to create more strength and resilience to overcome adversity. I am excited about the challenges and opportunities that lie ahead."*



Martina McAloon  
MDT Social Work  
Lead

## What is the Role of the Social Work Practitioner in General Practice ?

Social work is rooted in the tradition of "Relationships". Good relationships are based on the development of partnerships which enable growth, generation of fresh ideas and new ways of being. Good relationships are about listening and learning from each other based on mutual respect. Collaborative working with patients will be critical to establishing good relationships, Social Worker Practitioners facilitate this by:

- ◆ Promoting people's independence;
- ◆ Supporting people's social inclusion and participation in society;
- ◆ Helping people to keep safe and well.

## Mr Paul Morgan, Director of Children and Young People's Services and Executive Director of Social Work for the Southern Health and Social Care Trust

*"The addition of social workers to primary care teams is a major development for our profession. Social workers play a key role in the early intervention and prevention of health and social care issues with families. They have experience working with a diverse range of clients. They will be a huge asset to local practices by freeing up GPs to work on medical issues whilst they can offer their expert support to patients on a wide range of social issues. Social work with advocate for patients whilst helping them to improve their overall health and wellbeing, in all aspects of their lives."*



Mr Paul Morgan  
Executive Director of  
Social Work



Dr Kevin Allen  
MDT Social Work  
GP Lead

## Dr Kevin Allen Primary Care MDT GP Social Work

*"I graduated from Queen's University Belfast 2008 and have been working as a partner in Rathkeeland House Surgery, Crossmaglen since 2016. I look forward to a future where my GP colleagues have an in-house support team who can help provide care within their own surgeries. Introducing our new essential MDT members into primary care will help relieve the challenges which GP's face in these demanding times."*

*I would like to welcome our new Social Work Practitioners to Primary Care. They will be an invaluable resource to all of us and I know we will look back and wonder how we managed without them."*



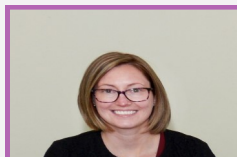
## How will Social Work Practitioners Support Patients in General Practice?

Social Work Practitioners can support patients with issues relating to:

- ♦ Isolation or loneliness
- ♦ Carer support
- ♦ Relationship difficulties
- ♦ Parenting difficulties
- ♦ Bereavement
- ♦ Traumatic life events
- ♦ Financial difficulties
- ♦ Housing difficulties
- ♦ Stress
- ♦ Alcohol and drug issues

## What Practices have MDT Social Workers?

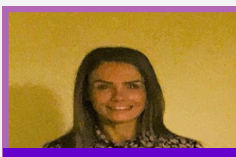
### Meadowland GP Practice



Elaine Trainor  
MDT Social Worker



Sharon Campbell  
MDT Social Worker



Rachel Walker  
MDT Social Worker  
Assistant

### Clanrye Surgery Practice



Valerie Berry  
MDT Social Worker



Renee O'Grady  
MDT Social Worker  
Assistant

*"The addition of a Social Work Practitioner to the MDT has created increased opportunities for case discussion, signposting and co-working across the professions."*  
Emma Finnegan, Senior Mental Health Practitioner

*"It is really nice to know someone actually cares about you."* 58 year old patient

### Dr McNiff & Partners, Banbridge



Craigene Wilkinson  
MDT Social Worker



Fidelma Ruddy  
MDT Social Worker



Veronica Kerr  
MDT Social Worker  
Assistant

*"I cannot underestimate how valuable having social workers as part of the practice MDT has been already and I know will continue to be in the future. In the few short weeks that they have been part of our practice team they have come to my aid to help with the management of a few complex cases, including one which was a challenging adult safe-guarding case. Sharon was a fountain of knowledge and was able to forward me the forms required as well as contacting the relevant agencies that needed to be informed. It took all the stress out of the situation that otherwise would have created a morning of calls for me trying to find the right people to talk to! I am excited to see all the benefits they will be able to bring to our practice over the coming months and years."*

Dr Clare Cassidy GP, Meadowlands Newry

## How Can I Book an Appointment?

Patients can book an appointment directly with the Social Work Practitioner via the GP Practice Reception. Alternatively you may be offered an appointment based on your symptoms when you call to make an appointment with your GP.

If you require any further Information please contact:

MDT Social Work Lead Martina McAloon

Email: [Martina.McAloon@southerntrust.hscni.net](mailto:Martina.McAloon@southerntrust.hscni.net) Telephone: 028 30262722

