

# Roadmap for Infant Feeding Support & Services in the Southern Health and Social Care Trust

Michelle O'Hagan - Infant Feeding Lead Midwife - 2022

## Antenatal

Southern Trust Breastfeeding Support Page Link ↓

<https://southerntrust.hscni.net/services/maternity-services/breastfeeding-support/>



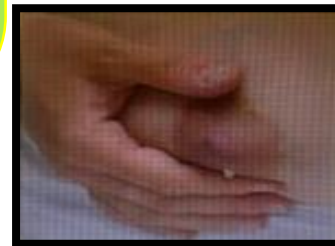
## After the birth of your baby



## Postnatal



- Skin to skin contact
- First breastfeed for all
- Bottlefeeding Skin to Skin
- Hand Expression
- Feeding Support from fully trained Maternity and Neonatal Staff



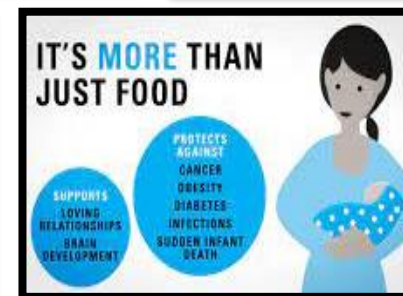
- Hand Expression
- Ongoing Skin to Skin
- Responsive feeding
- Cannot spoil your baby
- Can't overfeed a breastfed baby
- First Steps Nutrition
- Feeding Support from fully trained Maternity, Neonatal, Community and Health Visiting Staff
- Health Visiting Infant Feeding Helpline
- Breastfeeding Support Groups
- Breastfeeding Peer Support Service
- Referral Pathway for Specialist Feeding Support
- [Breastfeeding.information@southernhealth.hscni.net](mailto:Breastfeeding.information@southernhealth.hscni.net)

**Breastfeeding**

Good for baby. Good for mum

**HSC** and Social Care Trust

Quality Care - for you, with you



- Antenatal classes and Breastfeeding workshops
- Antenatal 'Conversations' with Midwife and Health Visitor
- Getting Ready for Baby Programme (First time parents)
- Twins/Tamba/Multiple births class
- Family Nurse Partnership (<19yrs old)
- Antenatal Colostrum Harvesting Service
- Breastfeeding support groups
- Referral Pathway for Specialist Feeding Support
- [Breastfeeding.information@southerntrust.hscni.net](mailto:Breastfeeding.information@southerntrust.hscni.net)
- UNICEF Baby Friendly Foreign language Resources <https://www.unicef.org.uk/babyfriendly/baby-friendly-resources/foreign>



Antenatal Colostrum Harvesting

