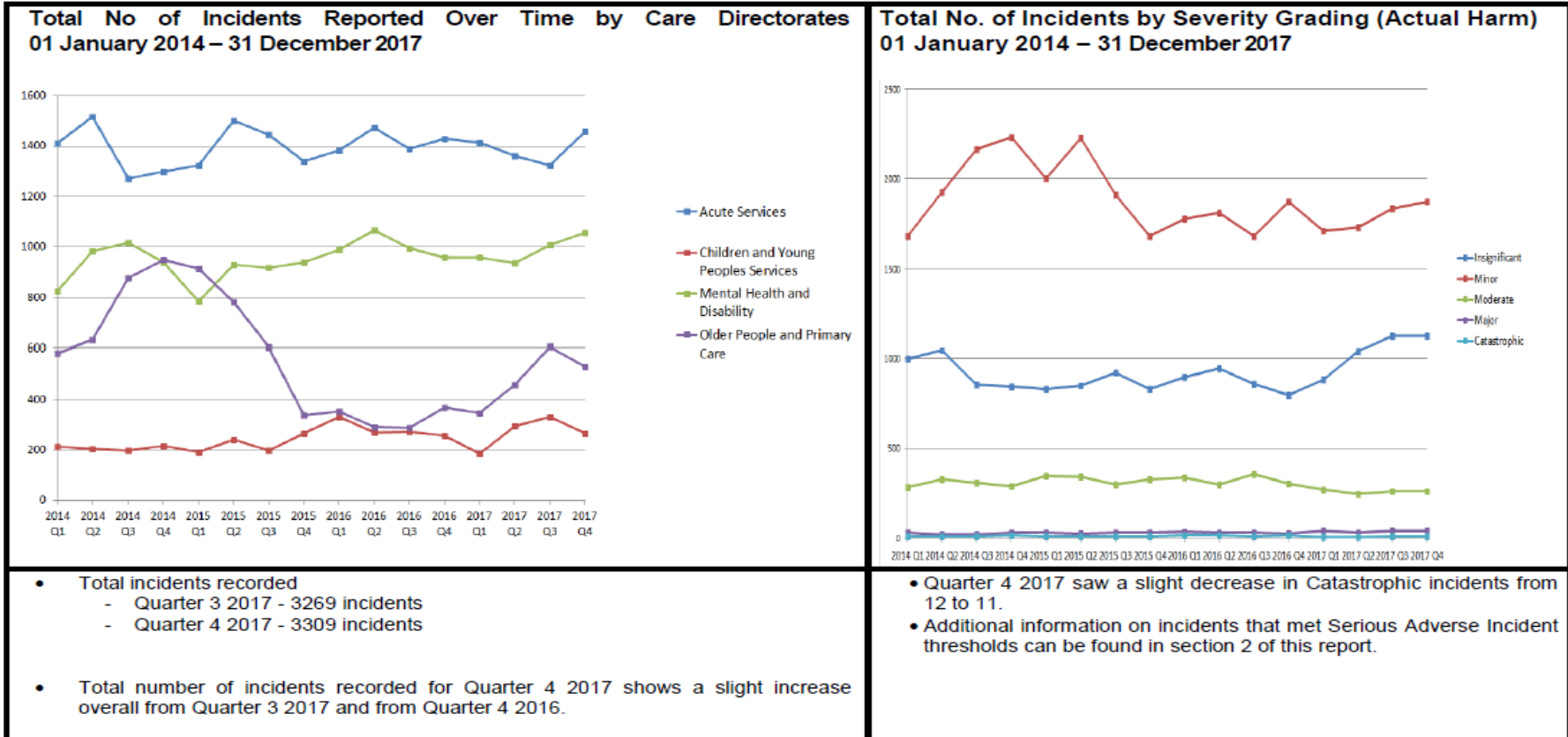


FOI Request 1595

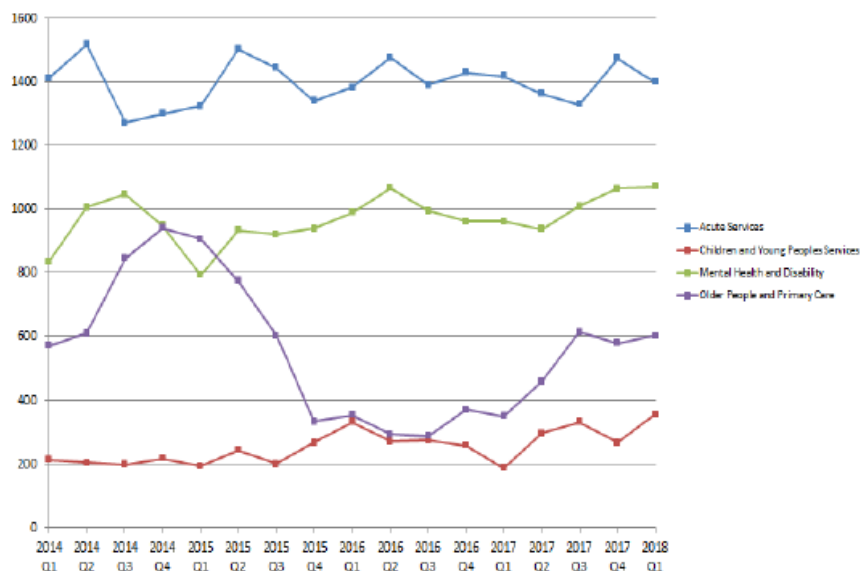
8) Copies of all management reports on adverse incidents sent to the Trust Board for years 2018-2022?

1. Adverse Incidents



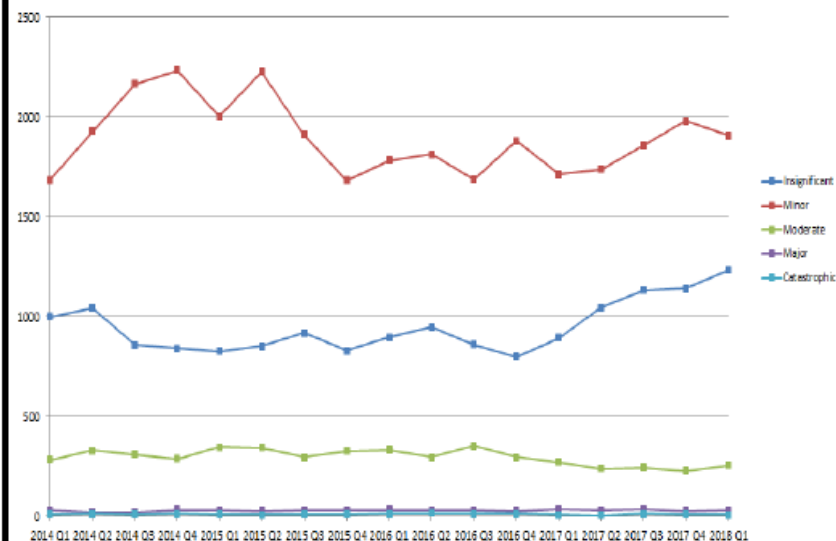
1. Adverse Incidents

Total No of Incidents Reported Over Time by Care Directorates 01 April 2014 – 31 March 2018



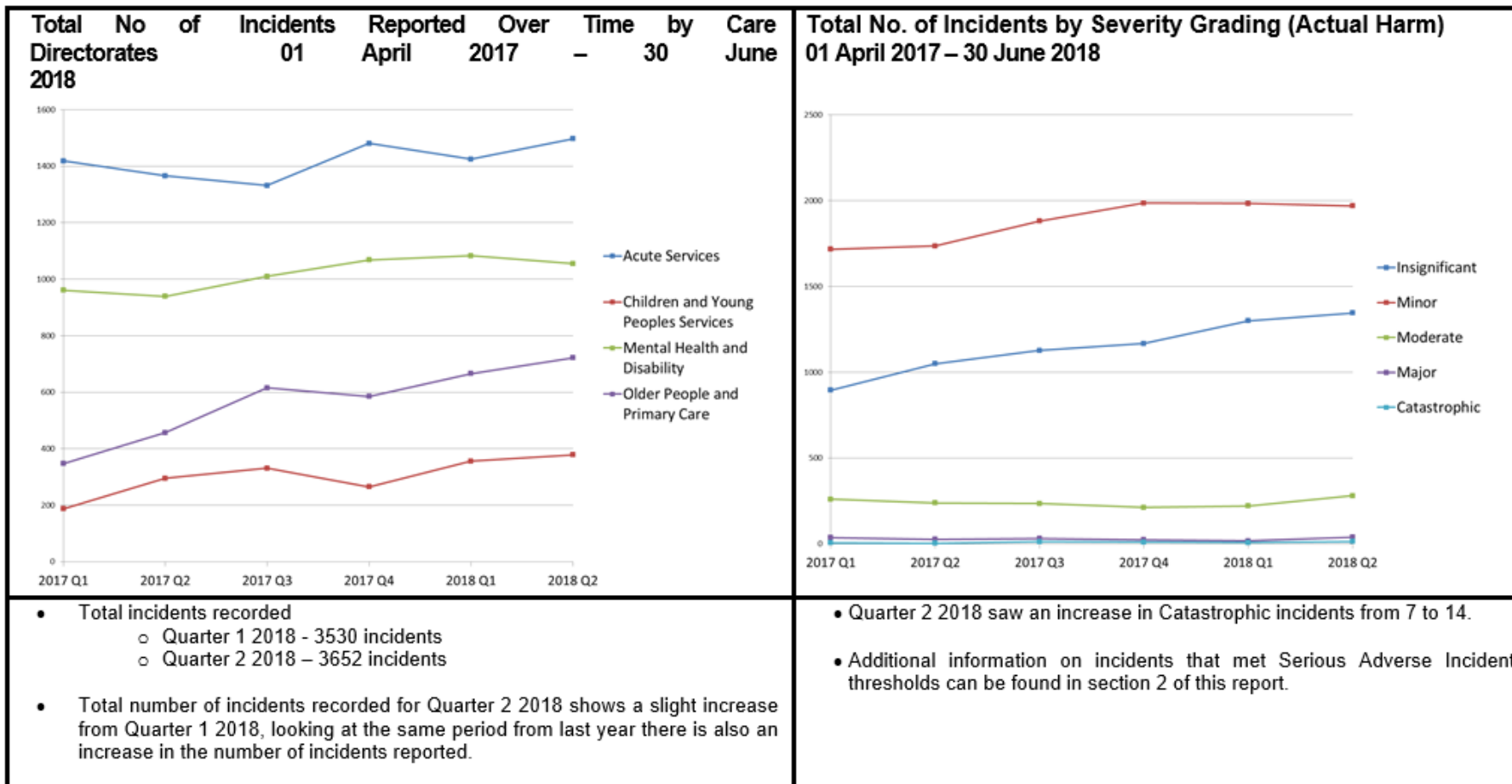
- Total incidents recorded
 - Quarter 4 2017 - 3382 incidents
 - Quarter 1 2018 - 3425 incidents
- Total number of incidents recorded for Quarter 1 2018 shows a slight increase from Quarter 4 2017, looking at the same period from last year there is also an increase in the number of incidents reported.

Total No. of Incidents by Severity Grading (Actual Harm) 01 April 2014 – 31 March 2018



- Quarter 1 2018 saw a slight decrease in Catastrophic incidents from 10 to 7.
- Additional information on incidents that met Serious Adverse Incident thresholds can be found in section 2 of this report.

1. Adverse Incidents



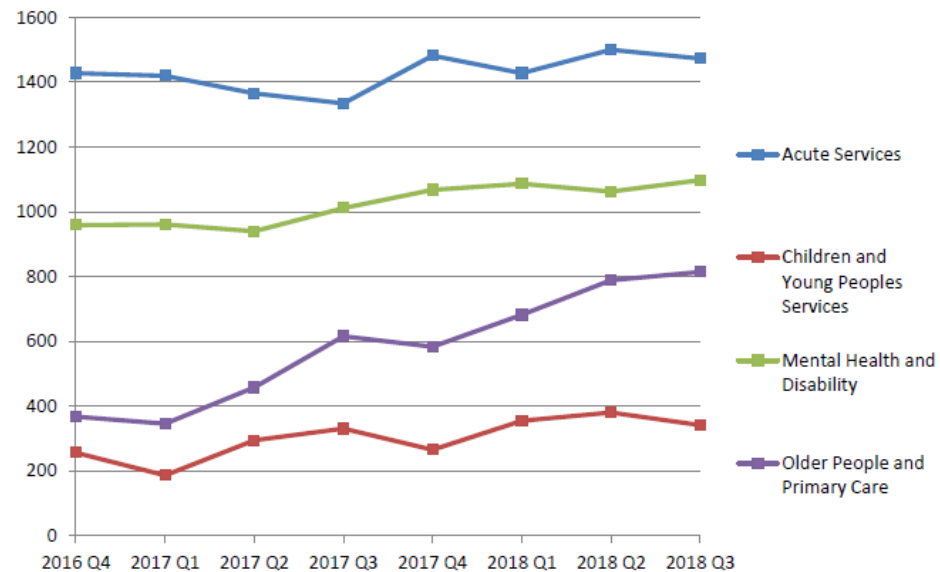
Incident Reporting

Incident Reporting (via Datix)

Incident reporting is essential for the Trust to learn about unintended or unanticipated occurrences in patient care. Recognising and reporting an incident (or near-miss), no matter the level of harm, is the first step in learning to reduce the risk of future occurrence.

The Southern Health and Social Care Trust reports approximately on average 12,500 incidents per year since the introduction of the DATIX web system in 2012. The majority of our incidents continue to cause either insignificant or minor harm (Figure 2).

Figure 1 – Incidents recorded by directorate Quarter 4 2016 to Quarter 3 2018



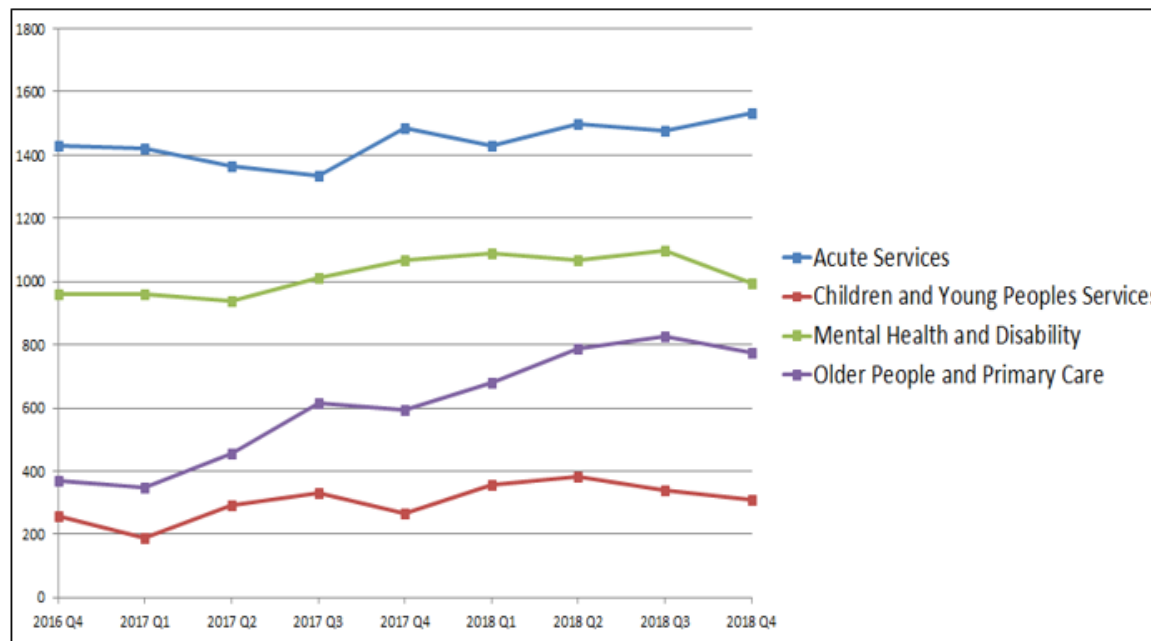
▲ Incident Reporting

Incident Reporting (via Datix)

Incident reporting is essential for the Trust to learn about unintended or unanticipated occurrences in patient care. Recognising and reporting an incident (or near-miss), no matter the level of harm, is the first step in learning to reduce the risk of future occurrence.

The Southern Health and Social Care Trust reports approximately on average 12,500 incidents per year since the introduction of the DATIX web system in 2012. The majority of our incidents continue to cause either insignificant or minor harm (Figure 2).

Figure 1 – Incidents recorded by directorate Quarter 4 2016 to Quarter 4 2018



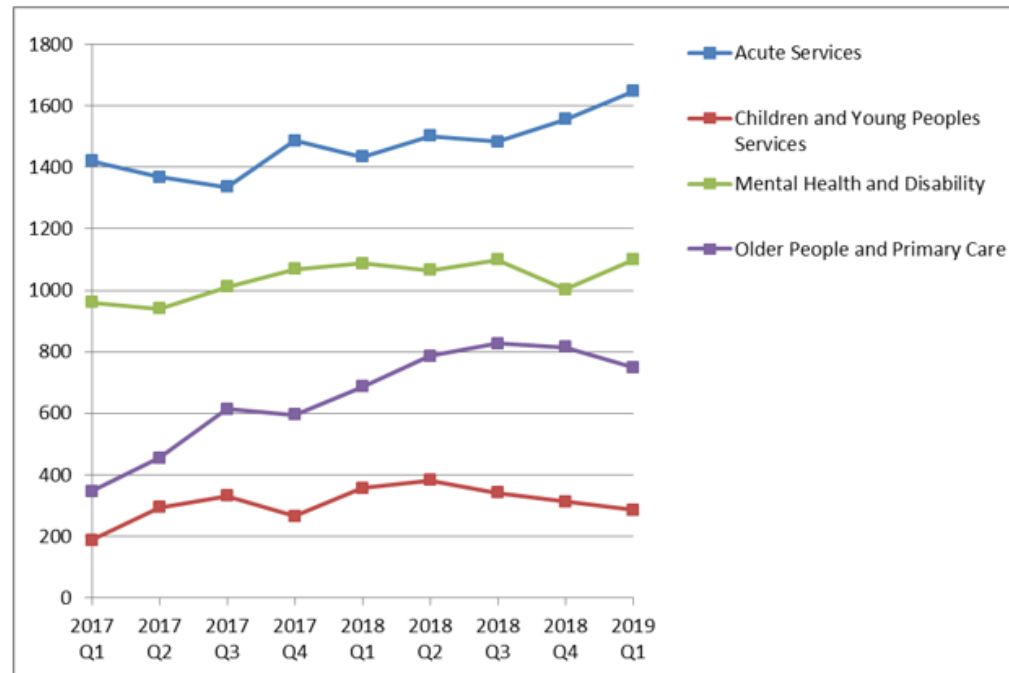
▲ Incident Reporting

Incident Reporting (via Datix)

Incident reporting is essential for the Trust to learn about unintended or unanticipated occurrences in patient care. Recognising and reporting an incident (or near-miss), no matter the level of harm, is the first step in learning to reduce the risk of future occurrence.

The Southern Health and Social Care Trust reports approximately on average 12,500 incidents per year since the introduction of the DATIX web system in 2012. The majority of our incidents continue to cause either insignificant or minor harm (Figure 2).

Figure 1 – Incidents recorded by directorate Quarter 1 2017 to Quarter 1 2019 (Jan – March)



2.0. Incident Reporting (via Datix)

2.1 No. Incidents Logged

Incident reporting is essential for the Trust to learn about unintended or unanticipated occurrences in patient care. Recognising and reporting an incident (or near-miss), no matter the level of harm, is the first step in learning to reduce the risk of future occurrence. The Southern Health and Social Care Trust operational directorates recorded 15,093 datix incidents in 2018/2019, an increase of 13% on 2017/2018.

Table & Fig 1.0 – Total SHSCT Quarterly Incidents 01 April 2017 - 30 Jun 2019.

QTR / Year	Total	% Change
Apr-Jun 2017	3060	
Jul-Sep 2017	3291	8
Oct-Dec 2017	3414	4
Jan-Mar 2018	3564	4
Total 17/18	13329	
Apr-Jun 2018	3738	5
Jul-Sep 2018	3749	0.3
Oct-Dec 2018	3700	-1
Jan-Mar 2019	3906	6
Total 18/19	15093	13
Apr-Jun 2019	4511	15

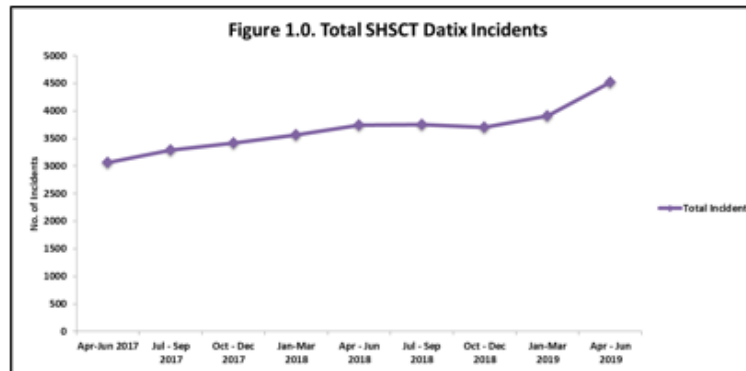
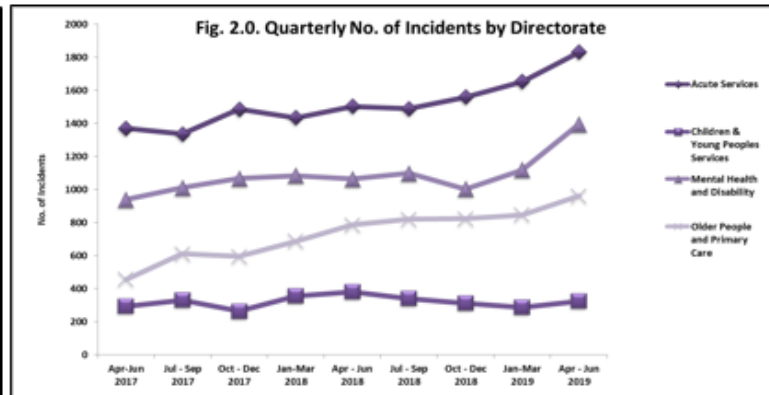


Fig 2.0. & Table 2.0 – Quarterly Incidents by Operational Directorate 01 April 2017 - 30 Jun 2019.

In this quarter Apr – Jun 2019 an increase in datix reporting across all directorates has contributed to the overall 15% increase.

- Acute - 11%
- CYPS – 13%
- MHD – 25%
- OPPC – 14%



2.0. Incident Reporting (via Datix)

2.1 No. Incidents Logged¹

Incident reporting is essential for the Trust to learn about unintended or unanticipated occurrences in patient care. Recognising and reporting an incident (or near-miss), no matter the level of harm, is the first step in learning to reduce the risk of future occurrence. The Southern Health and Social Care Trust directorates recorded 15,172 datix incidents in 2018/2019, an increase of 13% on 2017/2018. A 26% increase is projected to the year end 31/03/2020.

Table & Fig 1.0 – Total SHSCT Quarterly Incidents 01 April 2017 - 30 Sept 2019.

QTR / Year	Total	% Change
Apr-Jun 2017	3080	
Jul - Sep 2017	3321	8
Oct - Dec 2017	3424	3
Jan-Mar 2018	3575	4
Total 17/18	13400	
Apr - Jun 2018	3747	5
Jul - Sep 2018	3768	0.6
Oct - Dec 2018	3719	-1
Jan-Mar 2019	3938	6
Total 18/19	15172	13
Apr - Jun 2019	4634	18
Jul - Sept 2019	4889	6
Proj. 19/20	19046	26

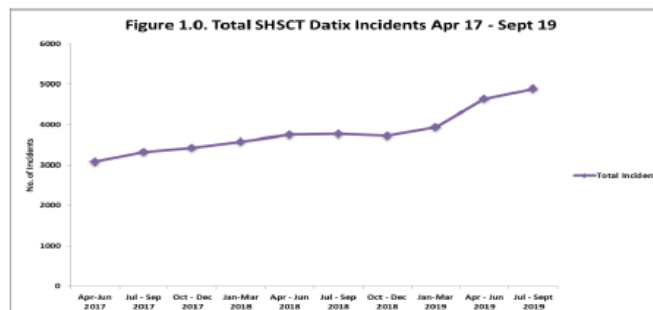
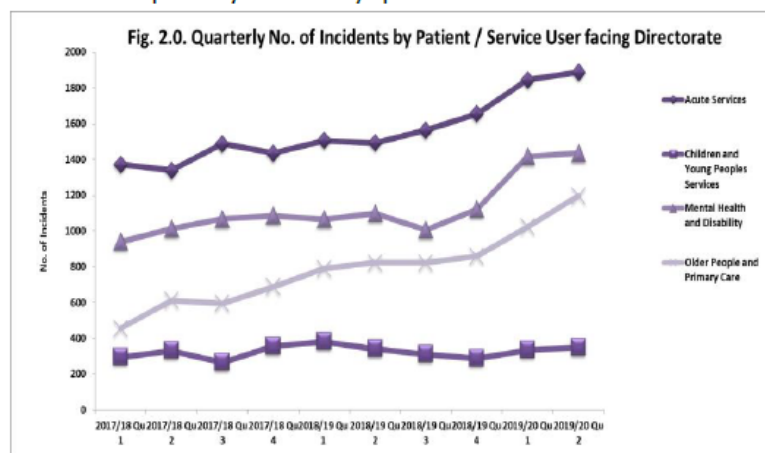


Fig 2.0. & Table 2.0

Table 2.0 details % change and Fig 2.0 Charts the quarterly incidents by operational directorate

In this quarter Jul – Sept 2019 an increase in datix reporting across all directorates has contributed to the overall 6% increase.

- Acute - 2%
- CYPS – 4%
- MHD – 1%
- OPPC – 17%



¹ In this period the no. of incidents across all directorates is reported. This reporting has been extended retrospectively for operational and corporate directorates back to April 2017.

2.0. Incident Reporting (via Datix)

2.1 No. Incidents Logged¹

Incident reporting is essential for the Trust to learn about unintended or unanticipated occurrences in patient care. Recognising and reporting an incident (or near-miss), no matter the level of harm, is the first step in learning to reduce the risk of future occurrence. The Southern Health and Social Care Trust directorates recorded 15,172 datix incidents in 2018/2019, an increase of 13% on 2017/2018. For 2019/2020, a further 24% increase is projected to the year end 31/03/2020.

Table & Fig 1.0 – Total SHSCT Quarterly Incidents 01 April 2017 - 31 Dec 2019.

QTR / Year	Total	% Change
Apr-Jun 2017	3080	
Jul - Sep 2017	3321	8
Oct - Dec 2017	3424	3
Jan-Mar 2018	3575	4
Total 17/18	13400	
Apr - Jun 2018	3747	5
Jul - Sep 2018	3768	0.6
Oct - Dec 2018	3719	-1
Jan-Mar 2019	3938	6
Total 18/19	15172	13
Apr - Jun 2019	4634	18
Jul - Sept 2019	4889	6
Oct - Dec 2019	4556	-7
Proj. 19/20	18772	24

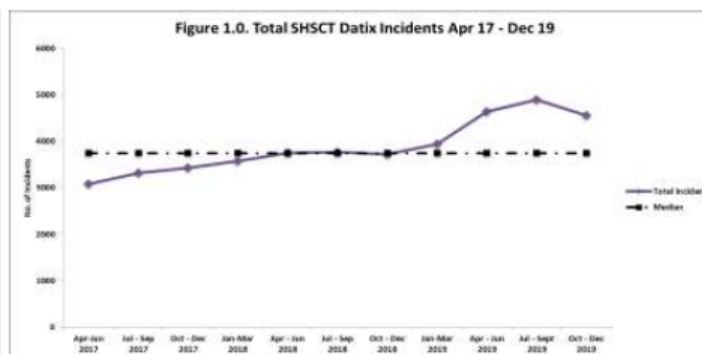


Table 2.0 details % change² by directorate in the quarter and Fig 2.0 charts the quarterly incidents by operational directorate since April 2017.

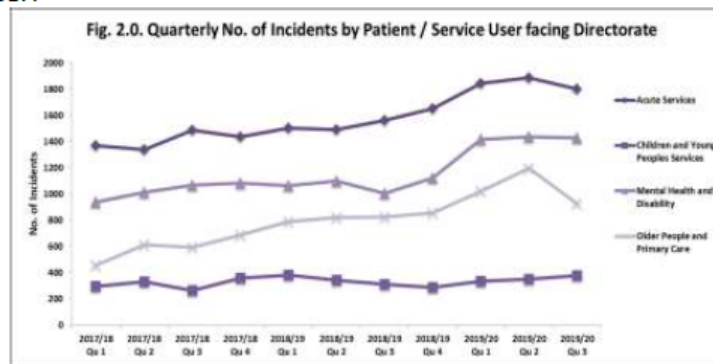
In this quarter Oct – Dec 2019 a increases and decreases in datix reporting across all directorates has contributed to 7% decrease in reported incidents.

Acute ↓ 5%

CYPS ↑ 8%

MHD → No Change

OPPC ↓ 22%



¹ In this period the no. of incidents across all directorates is reported. This reporting has been extended retrospectively for operational and corporate directorates back to April 2017.

² OPPC decrease is related to a data input delay with ISP incident recording in Dec 2019.

2.0. Incident Reporting (via Datix)

2.1 No. Incidents Logged

Incident reporting is essential for the Trust to learn about unintended or unanticipated occurrences in patient care. Recognising and reporting an incident (or near-miss), no matter the level of harm, is the first step in learning to reduce the risk of future occurrence. SHSCT directorates recorded 18,173 datix incidents in 2019/2020, an overall increase of 20% on 15,172 datix incidents reported in 2018/2019, which was an increase of 13% on 2017/2018 level. The 20 % increase in 2019/2020 has been as a result of higher levels of reporting in Q1 & Q2 as reporting fell by 7% in Q3 and in this quarter (Q4) incident reporting decreased by 10%¹,

Table & Fig 1.0 – Total SHSCT Quarterly Incidents 01 April 2017 - 31 Mar 2020.

QTR / Year	Total	% Change
Apr-Jun 2017	3080	
Jul - Sep 2017	3321	8
Oct - Dec 2017	3424	3
Jan-Mar 2018	3575	4
Total 17/18	13400	
Apr - Jun 2018	3747	5
Jul - Sep 2018	3768	0.6
Oct - Dec 2018	3719	-1
Jan-Mar 2019	3938	6
Total 18/19	15172	13
Apr - Jun 2019	4634	18
Jul - Sept 2019	4889	6
Oct - Dec 2019	4556	-7
Jan - Mar 2020	4094	-10
Total 19/20	18173	20

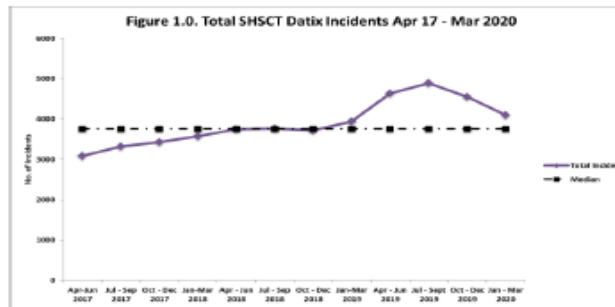


Table 2.0 details % change by directorate in the quarter and Fig 2.0 charts the quarterly incidents by operational directorate since April 2017.

In this quarter Jan – Mar 2020 a decrease in datix reporting across all directorates has contributed to 10% decrease in reported incidents.

Acute ↓5%

CYPS ↓1%

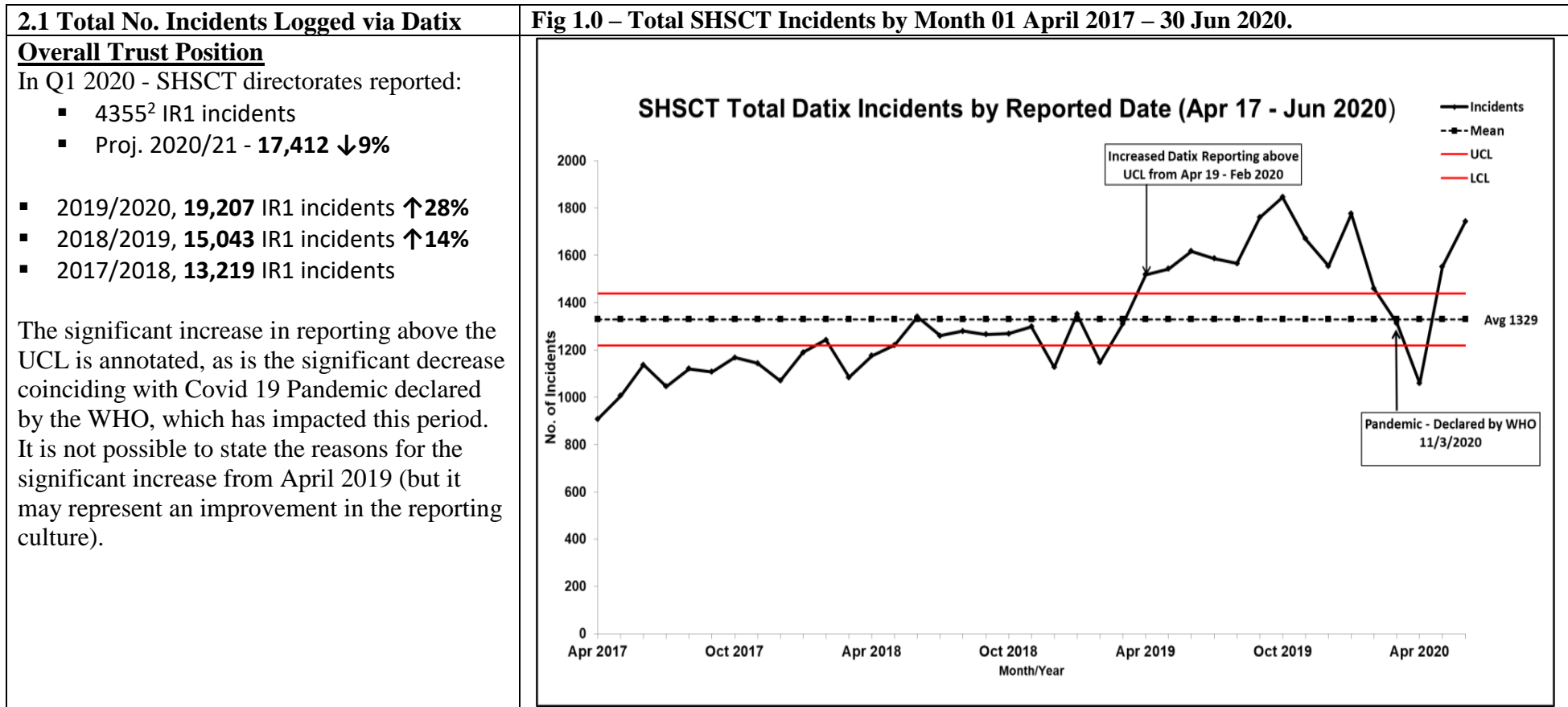
MHD ↓14%

OPPC ↓17%



¹ Monthly incidents reported - Oct 19 (1767), Nov 19 (1546), Dec 19 (1243) Jan 20 (1633), Feb 20 (1348) & March 20 (1113)

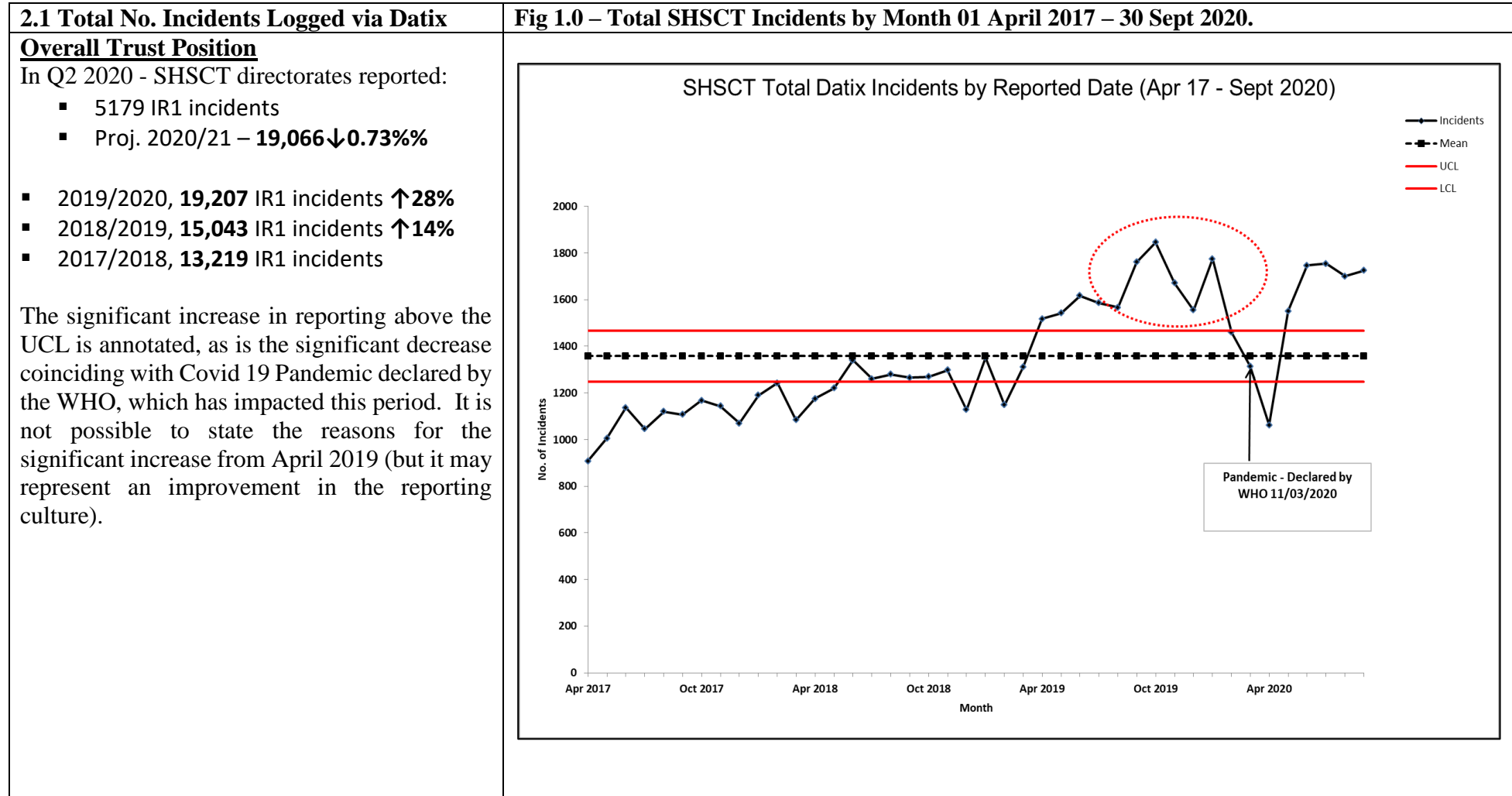
2.0. Incident Reporting (via Datix)¹



¹ Monthly incidents are now reported on the basis of the date on which the incident was reported via Datix and not the date that the incident occurred.

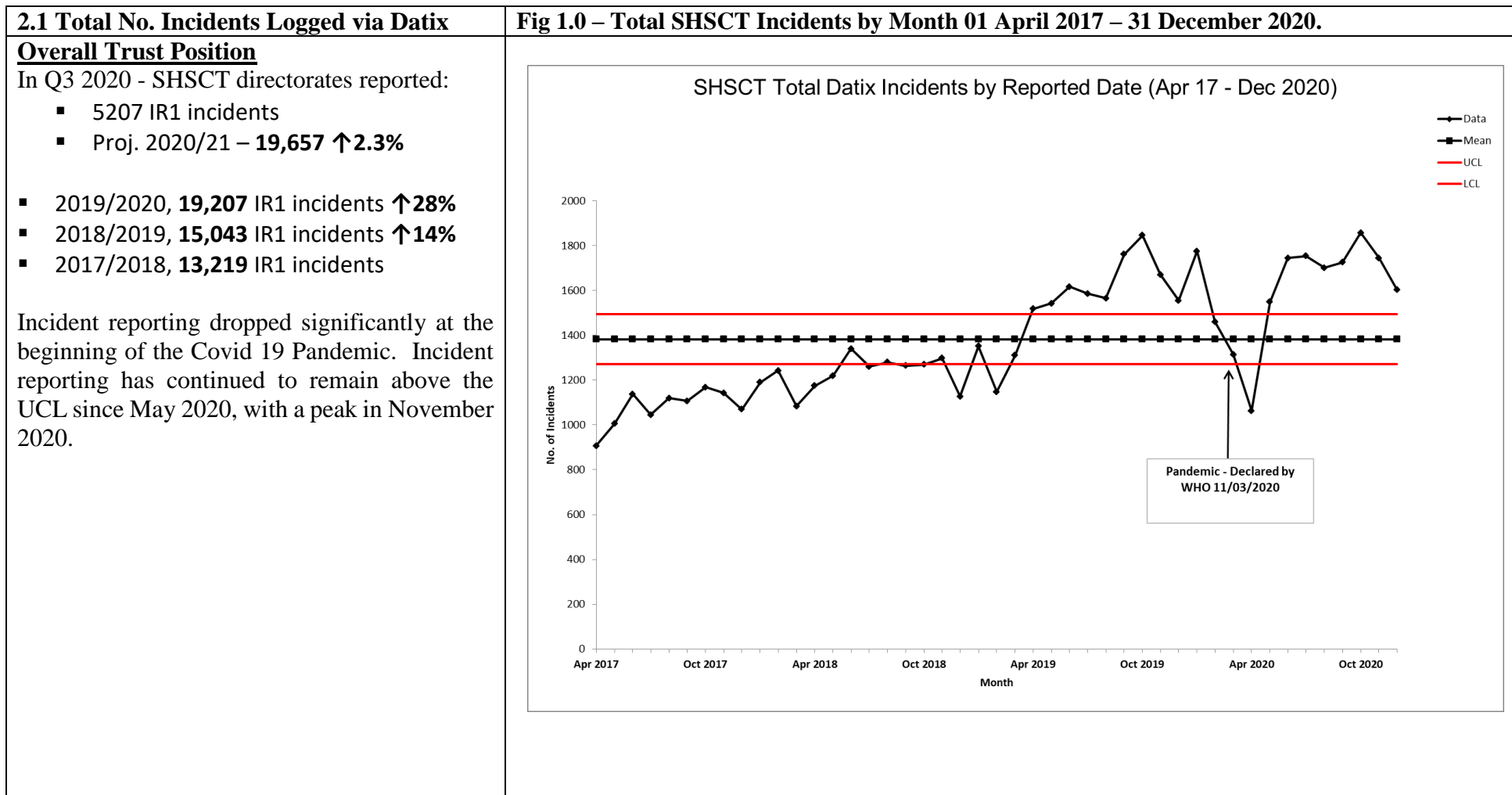
² 2 x 'rejected' incidents post the cut-off reporting date have reduced the actual figure to 4353 and hence the projection from 17420 to 17412

2.0. Incident Reporting (via Datix)³



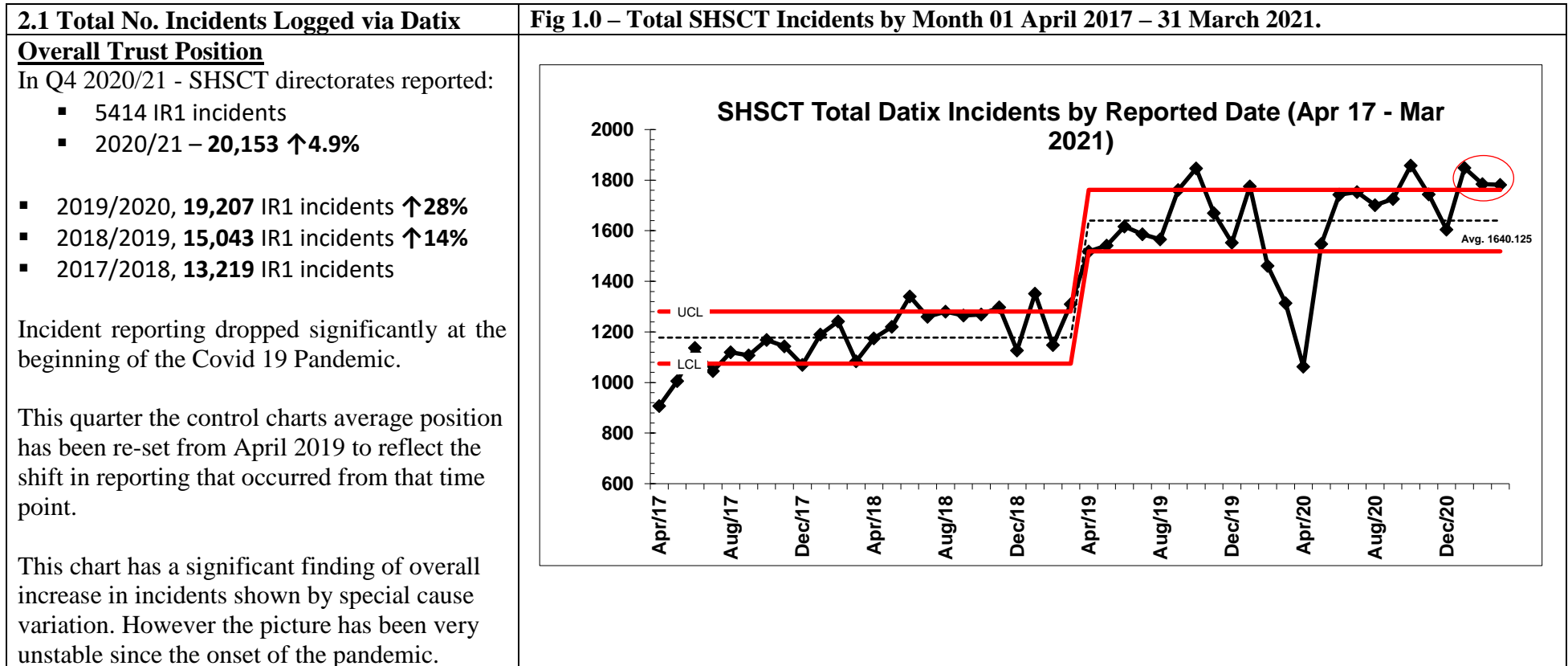
³ Monthly incidents are now reported on the basis of the date on which the incident was reported via Datix and not the date that the incident occurred.

2.0. Incident Reporting (via Datix)⁴



⁴ Monthly incidents are now reported on the basis of the date on which the incident was reported via Datix and not the date that the incident occurred.

2.0. Incident Reporting (via Datix)⁵



⁵ Monthly incidents are now reported on the basis of the date on which the incident was reported via Datix and not the date that the incident occurred.

2.0. Incident Reporting (via Datix)¹

<p>2.1 Total No. Incidents Logged via Datix</p> <p>Overall Trust Position</p> <p>In Q1 2021/22 - SHSCT directorates reported:</p> <ul style="list-style-type: none"> ▪ 5971 IR1 incidents ▪ Forecast for the year based on this quarter 23,884 ▪ 2020/21 – 20,153 ↑4.9% ▪ 2019/2020, 19,207 IR1 incidents ↑28% ▪ 2018/2019, 15,043 IR1 incidents ↑14% ▪ 2017/2018, 13,219 IR1 incidents <p>This quarter has seen a significant rise in overall reported incidents in each month, demonstrated by special cause variation with 3 upper confidence level breaches.</p>	<p>Fig 1.0 – Total SHSCT Incidents by Month 01 April 2017 – 30 June 2021.</p> <p>The chart displays monthly incident counts over a four-year period. The y-axis represents the number of incidents, ranging from 0 to 2500. The x-axis shows dates from April 2017 to April 2021. A horizontal line at approximately 1250 represents the Lower Control Limit (LCL), and a line at approximately 1750 represents the Upper Control Limit (UCL). The data points show a steady increase from around 1000 incidents in early 2017 to a peak of nearly 2000 in late 2019. Following a dip in early 2020, there is a sharp rise starting in April 2021, with several data points exceeding the UCL. The final data point in April 2021 is circled in red, indicating a special cause variation. The overall average is noted as 1673.0.</p>
--	---

2.0. Incident Reporting (via Datix)¹

<p>2.1 Total No. Incidents Logged via Datix</p> <p>Overall Trust Position In Q2 2021/22 - SHSCT directorates reported:</p> <ul style="list-style-type: none"> ▪ 5427 IR1 incidents ▪ Forecast for the year based on this quarter 22,796 ▪ 2020/21 – 20,153 ↑4.9% ▪ 2019/2020, 19,207 IR1 incidents ↑28% ▪ 2018/2019, 15,043 IR1 incidents ↑14% ▪ 2017/2018, 13,219 IR1 incidents <p>This quarter has seen incident reporting returning to a normal variation in the last 2 months.</p>	<p>Fig 1.0 – Total SHSCT Incidents by Month 01 April 2017 – 30 September 2021.</p>
--	---

2.0. Incident Reporting (via Datix)¹

<p>2.1 Total No. Incidents Logged via Datix</p> <p>Overall Trust Position In Q3 2021/22 - SHSCT directorates reported:</p> <ul style="list-style-type: none"> ▪ 5341 IR1 incidents ▪ Forecast for the year based on the last 3 quarters – 22,319. ▪ 2020/2021 – 20,153 IR1 incidents ↑10.75% ▪ 2019/2020, 19,207 IR1 incidents ↑16.20% ▪ 2018/2019, 15,043 IR1 incidents ↑48.37% ▪ 2017/2018, 13,219 IR1 incidents ↑68.84% <p>This quarter has seen incident reporting peak in November (n=1883). However, in December 2021 the number of incidents (n=1704) dropped to the lowest level since August 2020.</p> <p>Overall the number of incidents reported within this quarter has decreased by 2% since the last quarter. However, in comparison with the same reporting timeframe in previous year, it has</p>	<p>Fig 1.0 – Total SHSCT Incidents by Month 01 April 2017 – 31st December 2021.</p>
--	---

¹ Monthly incidents are now reported on the basis of the date on which the incident was reported via Datix and not the date that the incident occurred.

2.0. Incident Reporting (via Datix)¹

2.1 Total No. Incidents Logged via Datix

Overall Trust Position

In Q4 2021/22 - SHSCT directorates reported:

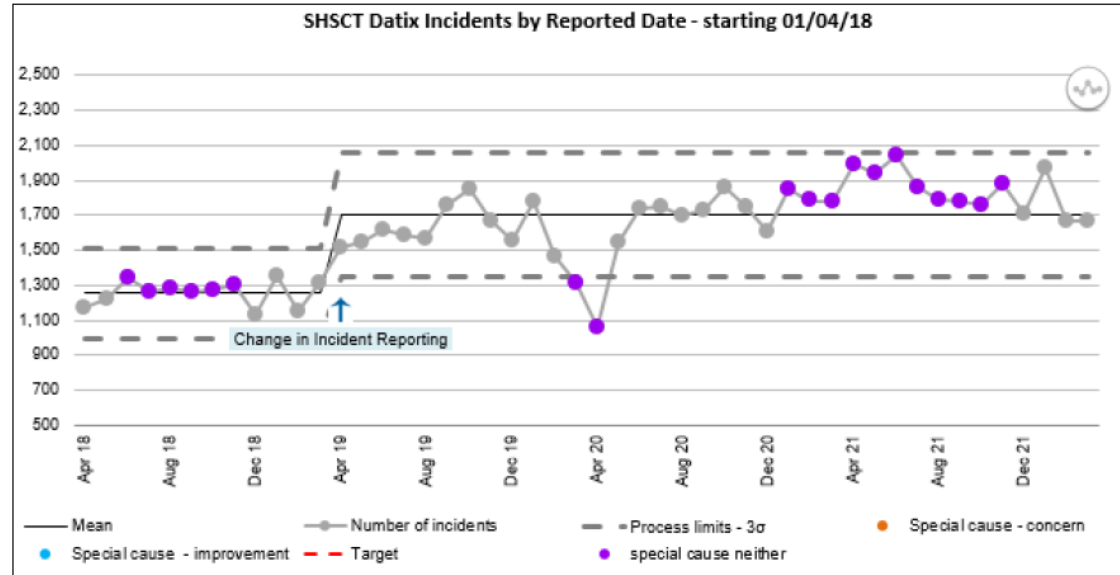
- 5306 IR1 incidents
- Total number of incidents for 2021/22 – 22,045.

- 2020/2021 – 20,153 IR1 incidents
↑9.39%
- 2019/2020, 19,207 IR1 incidents
↑14.78%
- 2018/2019, 15,043 IR1 incidents
↑46.54%
- 2017/2018, 13,219 IR1 incidents
↑66.77%

This quarter has seen incident reporting peak in January 2022 (n=1973). However, in February and March 2022 the number of incidents decreased to 1670 and 1663 respectively. This is the lowest number of incidents reported by month since December 2020.

Overall the number of incidents reported within this quarter has decreased by 0.66% since the last quarter. In comparison with the same reporting

Figure 1.0 – Total SHSCT Incidents by Month 01 April 2018 – 31st March 2022.



¹ Monthly incidents are now reported on the basis of the date on which the incident was reported via Datix and not the date that the incident occurred.

2.0. Incident Reporting (via Datix)¹

<p>2.1 Total No. Incidents Logged via Datix</p> <p>Overall Trust Position In Q1 2022/23 - SHSCT directorates reported:</p> <ul style="list-style-type: none"> ▪ 5234 IR1 incidents ▪ Forecast for 2022/23 – 20,936 IR1 incidents ▪ 2021/22 – 22,045 IR1 incidents ▪ 2020/2021 – 20,153 IR1 incidents ▪ 2019/2020 - 19,207 IR1 incidents ▪ 2018/2019 - 15,043 IR1 incidents <p>The reporting of incidents in this quarter shows normal variation with no significant change.</p> <p>However, compared to pre April 2021, there has been an increase in incident reporting which suggests the mean in the SPC needs to be reviewed.</p>	<p>Figure 1.0 – Total SHSCT Incidents by Month 01 April 2018 – 30th June 2022.</p> <p>SHSCT Datix Incidents by Reported Date - starting 01/04/18</p> <p>The chart displays the number of incidents per month. The y-axis ranges from 500 to 2,500. The x-axis shows dates from Apr 18 to Apr 22. A solid line represents the mean, which is around 1,500. Dashed lines represent process limits at ±3σ. A red dashed line indicates the target at approximately 1,300. Special cause markers are shown as colored dots: blue for improvement, red for concern, and purple for neither. A blue arrow points to a change in incident reporting in April 2019.</p>
--	---

No meeting held in December 2022