

DAY CARE BUILDINGS BASED ELIGIBILITY CRITERIA- November 2019 Appendix 1

Daycare is provided under Health and Personal Social services (Quality, Improvement and Regulation) (NI) Order 2003 as;

“a place where persons in need of prescribed services may attend for the purposes of assessment, rehabilitation or counselling, but where they are not provided with Board or accommodation”

(Note- prescribed services are the provision of personal care)

Daycare delivered in a residential or nursing home setting, as appropriate and Services provided as outreach from a daycare setting, as relevant and appropriate

Daycare programmes within the Shsct Disability Directorate are designed to meet the assessed needs of individuals for care, support, supervision or rehabilitation by reason of mental illness, functional impairment, cognitive impairment, learning disability, ill health, age, family or life circumstances and delivered in accordance with DHSSPS Daycare settings Minimum standards January 2012 and Daycare setting regulations (Northern Ireland) 2007.

Service Eligibility Criteria

SHSCT Disability buildings based Day Care is a specialist service where the:

- Applicant has been assessed as having a disability including sensory and eligible to receive SHSCT Disability services, is an open case to an adult community fieldwork team / transition team

and

- Applicants with a Physical Disability aged 18-64 years
- Applicants with a Learning Disability aged 18yrs+

and

- Applicant resides in the SHSCT geographical area or within an external commissioned placement;
 - Applicant has been assessed (**following completion of Day Services Screening Tool assisted by Aide Memoire**), as having highly complex physical/medical/mental health and wellbeing needs or severe behavioural needs through appropriate assessment that prevents participation in community based activities, assessed as at 'high risk' due to their level of vulnerability and could benefit from a placement in a Day care setting, subject to

ongoing review of needs and effectiveness (see attached screening tool to assist in determining need)

And

- Applicant will be subject to a travel assessment undertaken by professional staff in consultation with service user and carer as appropriate.

* it is acknowledged that the allocation of a day centre placement should provide meaningful day activities for service users.

Service Users residing in Private Nursing / Residential Homes and Supported Living facilities will have their day activity needs met as part of contracted service placement arrangements or where Service Users have been availing of a Day Care placement and enter Private Nursing Home/ Residential Home/ Supported Living their Day care placement will be maintained for a maximum 3 month period.

In exceptional circumstances consideration may be given to Day Care placement for residents in PNHs on the basis of severe assessed need and where a senior Head of Service panel determination has been made that individual needs (psychological, socialisation, etc.) cannot be appropriately met within the Nursing Home setting.

*Cognisance will be taken of the conditions of the Mental Capacity Act and implemented accordingly at operational level.

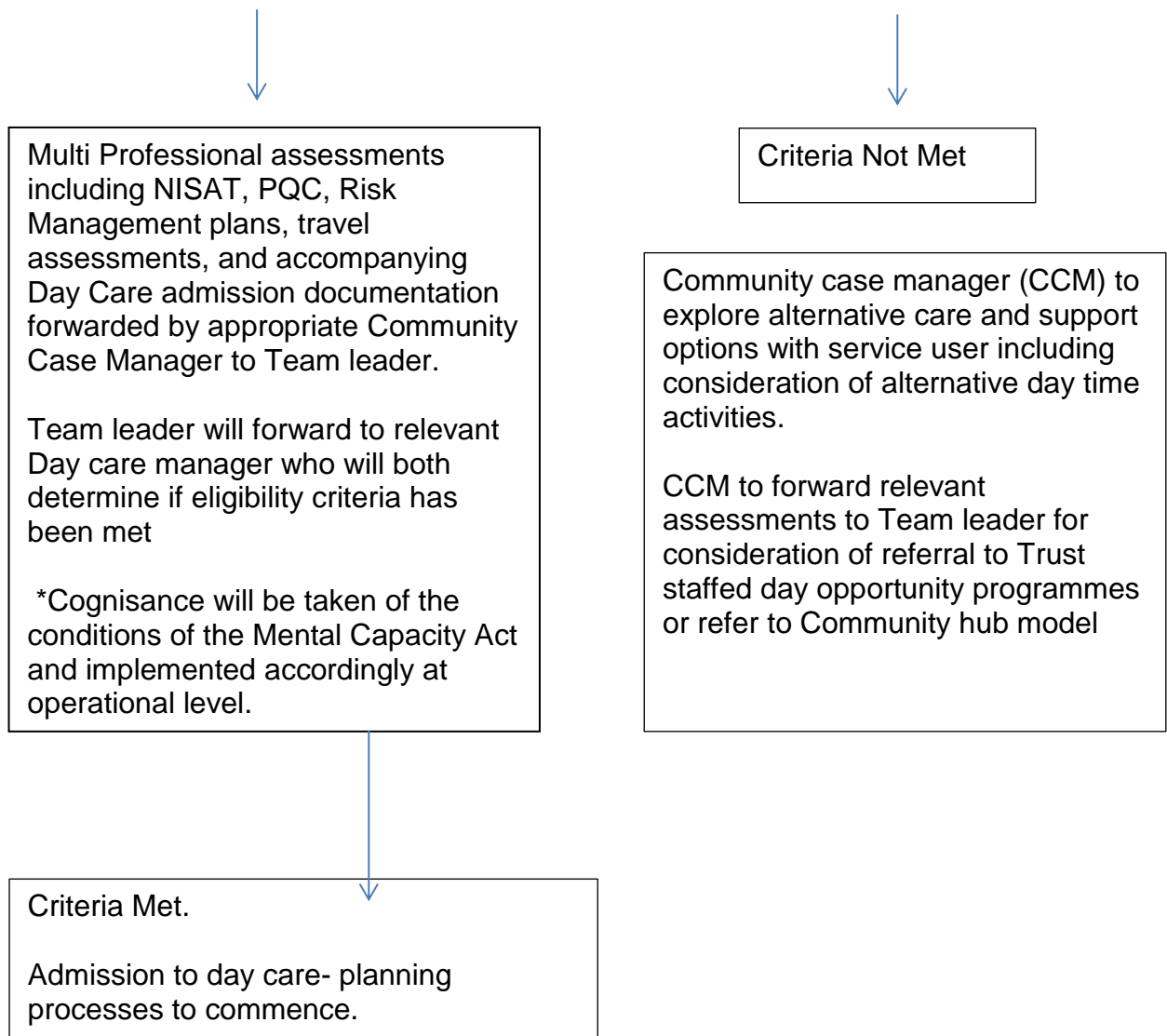
Cessation criteria

In exceptional circumstances a bespoke care arrangement may be required to meet the unique needs of an individual who cannot have their needs met within a day care environment. A decision on eligibility for bespoke care arrangement will be made by a senior Head of Service panel.

It should also be acknowledged that as Service Users age or become frailer they may require gentler alternatives to Day care provision.

Every effort will be made to ensure that a person's day service will be provided in close proximity to their home address

Referral Pathway to Day Care/ Day Opportunities



It should also be acknowledged that as Service Users age or become frailer they may require gentler alternatives to Day care provision.

Every effort will be made to ensure that a person's day care service will be provided in close proximity to their home address.