

Appendix 6: Consultation with Asbestos Register ie 3i Database (webmadesimple)

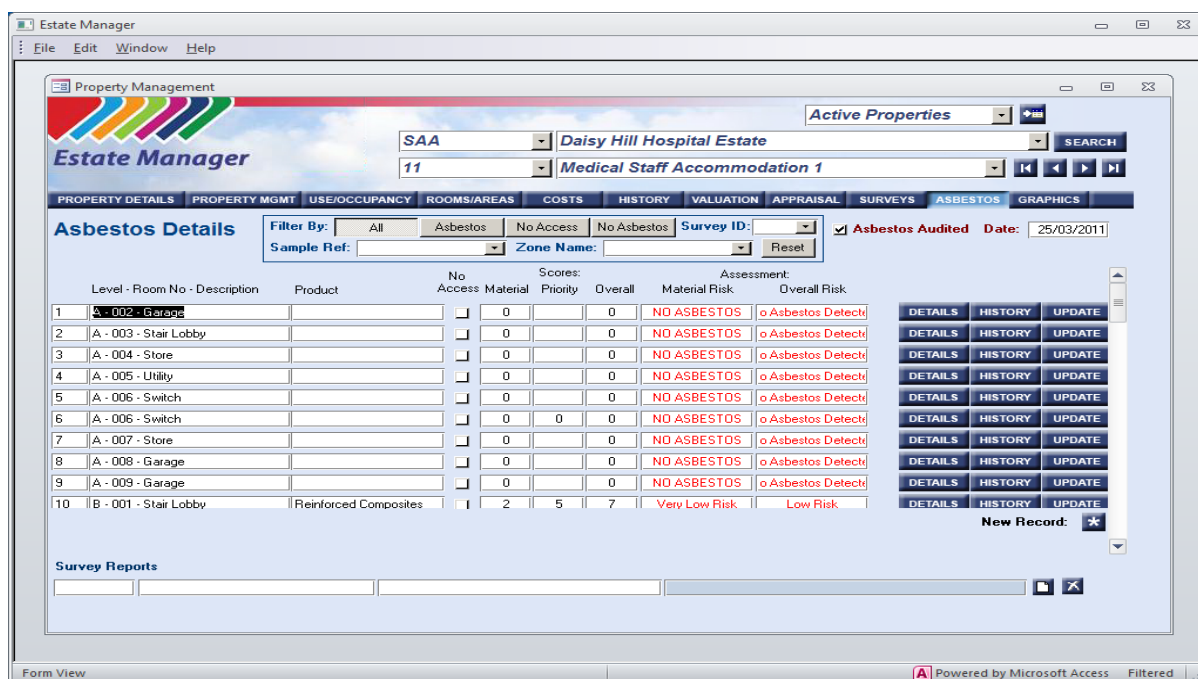
1. Introduction

The Trust's Asbestos Register hosted by 3i Studio is accessed via the internet at www.webmadesimple.co.uk. A log in page will appear asking for your user name and password. Upon accessing the database there are two ways to access Asbestos information, either by selecting 'Property Database' or 'Reports'

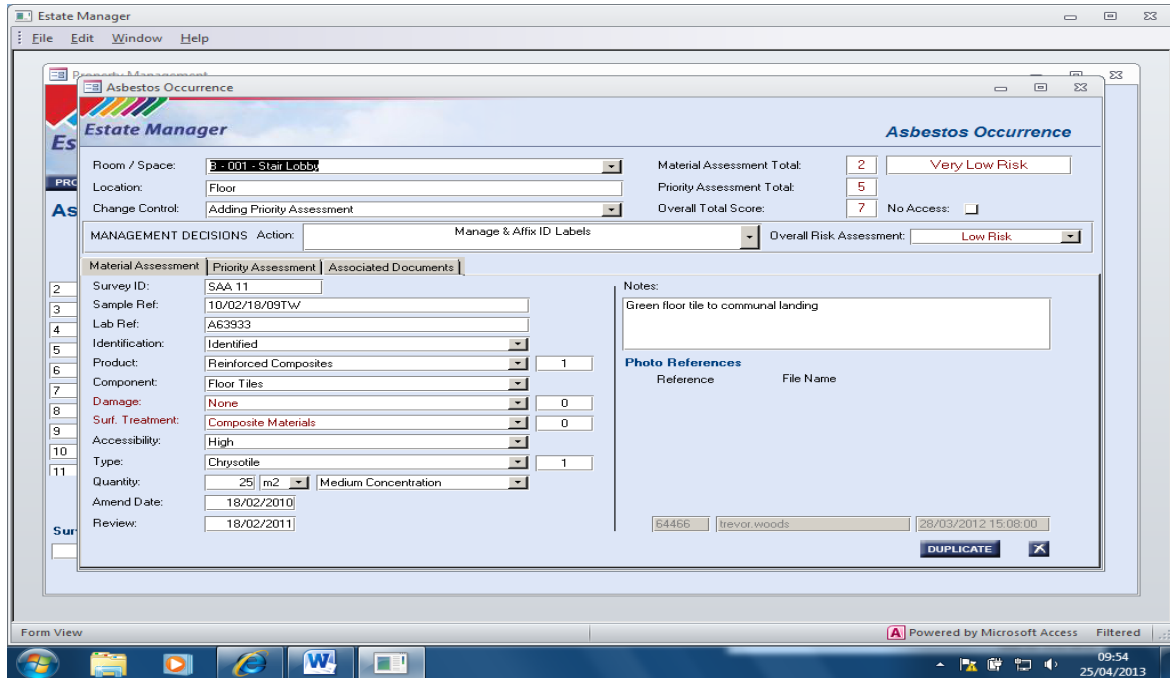


2. Accessing the Property Database

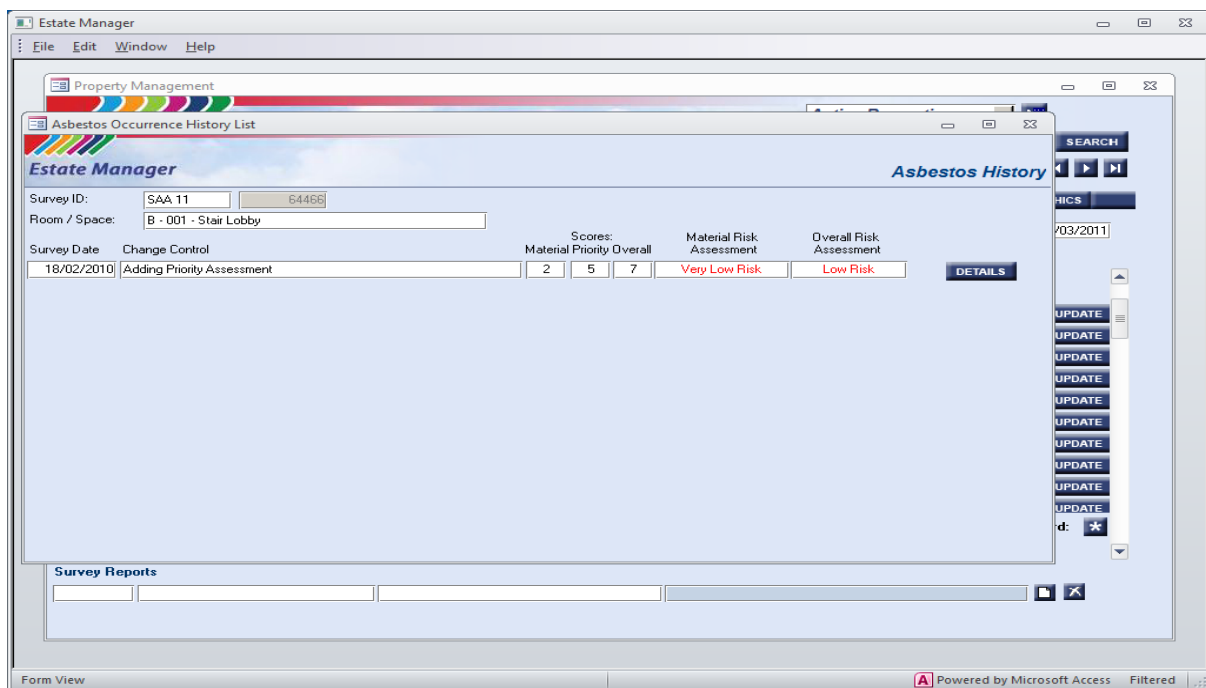
Upon accessing the Property Database you must select the site/block you wish to view then select the *Asbestos* tab below. All asbestos related data for that property will then appear.



To view specific data relating to a space or room select the *Details* tab which will display all the relevant information for the Asbestos identified within that space including a Material Risk Assessment



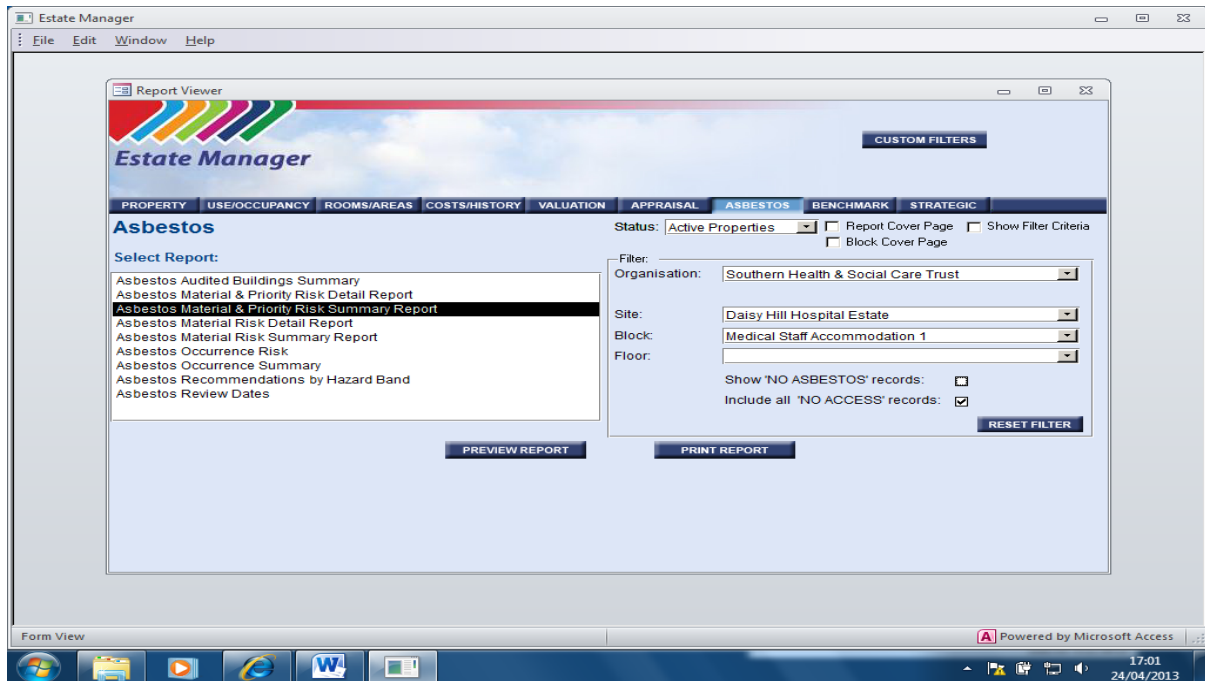
If you want to view the relevant *Priority Assessment* or any historical data relating to asbestos within this space select the relevant tab i.e. *History*



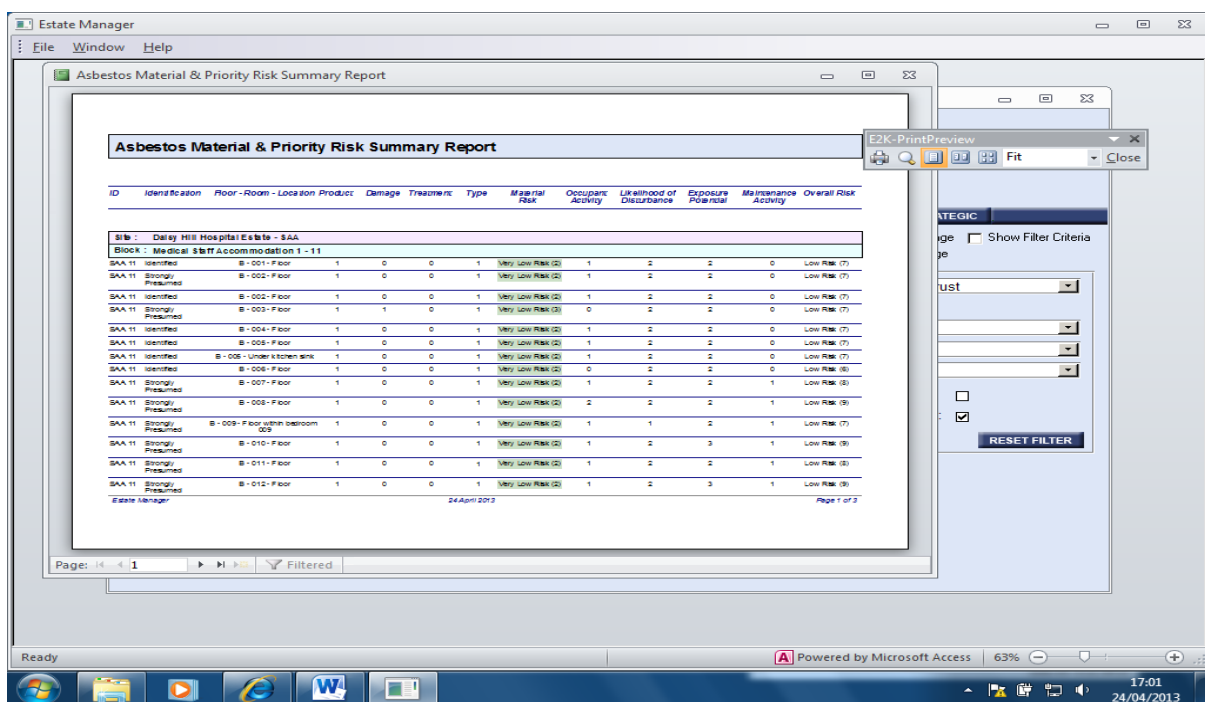
3. Accessing Reports

If you wish to view Asbestos information in report format return to the *Main Menu* and select *Reports*. Then select either *Asbestos Material and Priority Risk Summary Report* or *Asbestos Material and Priority Risk Detail Report*. Then select SITE, BLOCK and FLOOR if applicable.

You can further tailor your search by indicating to either view *NO ASBESTOS* records or *NO ACCESS* records.



Example below of an **Asbestos Material and Priority Risk Summary Report**



For more detailed reporting information select Asbestos Risk Detail Report

The screenshot shows a web application window titled "Estate Manager" with a menu bar (File, Edit, Window, Help). Inside, there is a "Report Viewer" sub-window. The main interface has a navigation bar with tabs: PROPERTY, USE/OCCUPANCY, ROOMS/AREAS, COSTS/HISTORY, VALUATION, APPRAISAL, ASBESTOS (selected), BENCHMARK, and STRATEGIC. Below the navigation bar, the "Asbestos" section is active. On the left, a "Select Report:" list contains several options, with "Asbestos Material Risk Detail Report" highlighted. On the right, a "Filter:" section includes a "Status:" dropdown set to "Active Properties", checkboxes for "Report Cover Page" and "Block Cover Page", and a "Show Filter Criteria" checkbox. Below these are dropdown menus for "Organisation:" (Southern Health & Social Care Trust), "Site:" (Daisy Hill Hospital Estate), "Block:" (Medical Staff Accommodation 1), and "Floor:". A "Show 'NO ASBESTOS' records:" checkbox is checked. At the bottom of the filter section is a "RESET FILTER" button. Below the report list and filter section are "PREVIEW REPORT" and "PRINT REPORT" buttons. The footer of the application shows "Form View" on the left and "Powered by Microsoft Access" on the right.

4. Accessing Drawings

To access drawings via the 3i Database the procedure is as follows,

- select Property Database
- select the Property Details tab as indicated below

The screenshot shows the 'Estate Manager' software interface. The 'Property Details' tab is active, displaying information for 'Daisy Hill Hospital Estate' (SAA 04) and 'Mortuary/Workshops'. The interface includes a navigation menu with tabs for PROPERTY DETAILS, PROPERTY MGMT, USE/OCCUPANCY, ROOMS/AREAS, COSTS, HISTORY, VALUATION, APPRAISAL, SURVEYS, ASBESTOS, and GRAPHICS. The 'Property Details' section contains various fields for organization, occupancy, and area calculations. A 'Block Areas' table is visible, showing floor area, gross internal area, gross external area, net useable area, heated volume, and building footprint. The 'CAD Drawing Register' is also visible, listing 'Ground Floor' with an order of 97.

Block Areas	Est m ²	IF :
Floor Area:	615.90	6,630
Gross Int. Area:	983.77	10,589
Gross Ext. Area:	1,025.43	11,038
Nett Useable Area:	0.00	0
Heated Volume:	1,765.00	62,327
Building Footprint:	0.00	0

- then view CAD Drawing Register and select the tab of the specific drawing required

